

The Big Ban Theory: A Pre- and Post-Intervention Dataset of Online Content Moderation Actions

Aldo Cerulli^{1,2*}, Lorenzo Cima^{1,3*}, Benedetta Tessa^{1,2†}, Serena Tardelli¹, Stefano Cresci¹

¹IIT-CNR, Italy

²Dept. of Computer Science, University of Pisa, Italy

³Dept. of Information Engineering, University of Pisa, Italy

{name.surname}@iit.cnr.it

Abstract

Online platforms rely on moderation interventions to curb harmful behavior such as hate speech, toxicity, and the spread of mis- and disinformation. Yet research on the effects and possible biases of such interventions faces multiple limitations. For example, existing works frequently focus on single or a few interventions, due to the absence of comprehensive datasets. As a result, researchers must typically collect the necessary data for each new study, which limits opportunities for systematic comparisons. To overcome these challenges, we introduce *The Big Ban Theory* (TBBT)—a large dataset of moderation interventions. TBBT covers 25 interventions of varying type, severity, and scope, comprising in total over 339K users and nearly 39M posted messages on Reddit and Voat. For each intervention, we provide standardized metadata and pseudonymized user activity collected three months before and after its enforcement, enabling consistent and comparable analyses of intervention effects. In addition, we provide a descriptive exploratory analysis of the dataset, along with several use cases of how it can support research on content moderation. With this dataset, we aim to support researchers studying the effects of moderation interventions and to promote more systematic, reproducible, and comparable research.

Datasets — <https://doi.org/10.5281/zenodo.18245669>

Introduction

As online platforms grow in scale and societal relevance, they increasingly rely on a wide range of moderation interventions to curb illegal, harmful, or otherwise problematic behavior (Grimmelmann 2015; Gillespie 2018). The volume, diversity, and frequency of such interventions have expanded substantially (Shahi et al. 2025), reflecting both the growth of online user activity and the complexity of governing large-scale socio-technical systems. As a result, the current landscape of content moderation is highly multifaceted, encompassing multiple platforms, heterogeneous intervention types, and a broad spectrum of potential outcomes.

Frequently applied interventions include *hard* actions, such as user or community bans (Jhaver et al. 2021;

Cima et al. 2024) and content removals (Jhaver, Rathi, and Saha 2024), as well as an expanding set of *soft* interventions encompassing warning messages (Papakyriakopoulos and Goodman 2022; Ling, Gummadi, and Zannettou 2023), demonetization (Caplan and Gillespie 2020), counterspeech (Garland et al. 2022; Cima et al. 2025a), and other forms of friction or visibility reduction (Chandrasekharan et al. 2022; Jahn et al. 2025). These interventions are typically applied as discrete, time-stamped actions that modify ongoing patterns of user and community behavior, thereby creating natural—though methodologically challenging—opportunities to measure their effects by comparing behavior before and after the moderation takes place.

Within this complex and rapidly evolving context, there is a strong need for empirical studies that assess the strategies, consequences, and broader implications of content moderation. Relevant tasks include evaluating whether moderation practices are fair, transparent, and effective. Concerning effectiveness, prior research has reported mixed findings (Cima et al. 2025b). For example, some interventions appear to achieve their intended goals (Costello, Pennycook, and Rand 2024; Horta Ribeiro et al. 2025), others show limited or no measurable impact (Aslett et al. 2022), and some are associated with unintended or counterproductive effects (Bail et al. 2018; Pennycook et al. 2020; Trujillo and Cresci 2022). Adverse effects may also include behavioral adaptation, evasion, or migration, whereby affected users relocate their activity to other spaces—either on the same platform or elsewhere entirely—leading to outcomes that manifest outside the directly moderated space (Horta Ribeiro et al. 2021). Amid this scenario, resources that enable systematic, comparative, and reusable research on the application and effects of moderation interventions are increasingly needed to support understanding of how moderation operates and with what consequences.

Nonetheless, existing resources are overall limited and fragmented. The “post-API” era has been characterized by a significant reduction in access to platform data, and subsequent efforts to mitigate these constraints have yet to restore broad and reliable access (Jaursch, Ohme, and Klinger 2024; Mimizuka et al. 2025). This creates clear obstacles for research on online spaces. As a result, scholars often struggle to collect and curate adequate datasets. Moreover, existing datasets of moderation interventions are typically

*Equal contributions.

†Corresponding author.

Copyright © 2026, Association for the Advancement of Artificial Intelligence (www.aaai.org). All rights reserved.

narrow in scope, covering one or a few interventions, usually on a single platform (Trujillo and Cresci 2022; Shen and Rosé 2022; Russo et al. 2023). The remaining datasets are mostly general-purpose and were not designed to capture moderation interventions as analyzable events (Baumgartner et al. 2020; Seckin et al. 2025), making them difficult to use directly and systematically for studying the effects of moderation actions. Finally, existing datasets have been collected using heterogeneous definitions, methodologies, and parameters, which limits their interoperability and prevents comprehensive, systematic analyses. On the flip side, some recent initiatives have partially improved data availability. X has made publicly available comprehensive datasets related to its *Community Notes* program,¹ including note-level information and associated metadata (Chuai et al. 2024; Slaughter et al. 2025). Furthermore, the Digital Services Act has established the Transparency Database,² a centralized open repository where large platforms must report moderation actions taken in the EU. However, while valuable, this resource is limited to *metadata* about moderation decisions—such as the type of violation or intervention—and does not include the moderated content, conversational context, or pre- and post-intervention data (Kaushal et al. 2024; Trujillo, Fagni, and Cresci 2025). Consequently, it cannot support analyses of moderation effects, biases, or other downstream tasks. In the absence of standardized, intervention-centered datasets, researchers must therefore reconstruct moderation events and assemble relevant data manually from disparate sources.

Contribution. We contribute to addressing these limitations by introducing *The Big Ban Theory* (TBBT) dataset—a large-scale, intervention-centered collection of moderation data. The dataset comprises 25 moderation interventions of multiple types—such as bans, quarantines, and content removals—enforced between 2015 and 2023. All interventions occurred on Reddit, but some caused user migrations to Voat, for which we also provide data. Across all interventions, TBBT contains pseudonymized data about 38,700,732 messages published by 339,125 distinct users. The dataset includes systematically aligned observations from fixed windows before and after each intervention, allowing to examine both the context preceding moderation—such as behavioral or content-level signals that may trigger enforcement—and its subsequent effects, including changes in user behavior, participation patterns, and community dynamics. TBBT is designed to support a broad range of analyses that are time-demanding and challenging with existing resources. These include assessing the fairness, consistency, and heterogeneity of moderation practices; studying short- and medium-term responses to different intervention types; and examining potential spillover effects. While not exhaustive, TBBT provides a structured foundation for comparative and cumulative research on moderation interventions, supporting further work and the development of shared, reusable resources.

¹<https://communitynotes.x.com/guide/en/under-the-hood/download-data>

²<https://transparency.dsa.ec.europa.eu/>

Related Work

Content Moderation Datasets

Current works on online content moderation typically rely on datasets comprising users' posts and comments, together with basic metadata such as text, creation and deletion timestamps, user identifiers, and community membership. Thanks to this information, they make it possible to understand how users react to content moderation interventions by comparing data collected before and after the intervention. For example, studies on community interventions such as bans or quarantines on Reddit analyzed longitudinal datasets of user comments to track changes in a variety of indicators, including activity, toxicity, in-group vocabulary, factual reporting, political bias, and community participation (Cima et al. 2024, 2025b; Trujillo et al. 2021; Trujillo and Cresci 2022; Shen and Rosé 2022; Trujillo and Cresci 2023). By assessing the outcome of the intervention at both individual and community levels, these studies were able to measure how these indicators evolved over time. Beyond Reddit, research on other platforms—such as X and Wikipedia—similarly relies on longitudinal datasets built from posts made by users to study the effects of deplatforming, quarantine and other types of interventions (Horta Ribeiro et al. 2025; Zannettou 2021; Jhaver et al. 2021).

Taken together, this body of work highlights the central role of datasets that combine basic account- and activity-level information with temporal alignment around a moderation event. While such datasets have enabled valuable case-specific analyses of moderation outcomes, they are typically constructed for a single intervention or a small set of related interventions on a single platform. As a result, findings are often difficult to compare across studies, and it remains challenging to generalize conclusions across different types of moderation actions, platforms, or contexts. This limitation underscores the need for more systematic, reusable resources that support comparative analyses of moderation interventions across settings.

Effects of Moderation Interventions

A large body of prior work relies on post-hoc analyses to assess how users, content, and communities respond to moderation interventions. These studies typically adopt descriptive or quasi-causal designs that compare indicators extracted from posts or comments—such as activity, toxicity, linguistic features, or participation patterns—before and after an intervention takes place (Trujillo et al. 2021; Cima et al. 2024; Shen and Rosé 2022; Copland 2020). In their simplest form, such analyses measure differences across pre- and post-intervention windows and assess their statistical significance using techniques such as ANOVA or related tests (Trujillo and Cresci 2023). More rigorous approaches employ causal inference methods, including Difference-in-Differences, to account for temporal trends and unobserved confounders (Cima et al. 2025b). When more granular temporal data are available, researchers often aggregate outcomes into daily or weekly time series and apply methods such as interrupted time series analysis or Bayesian structural time series models to estimate both immediate and

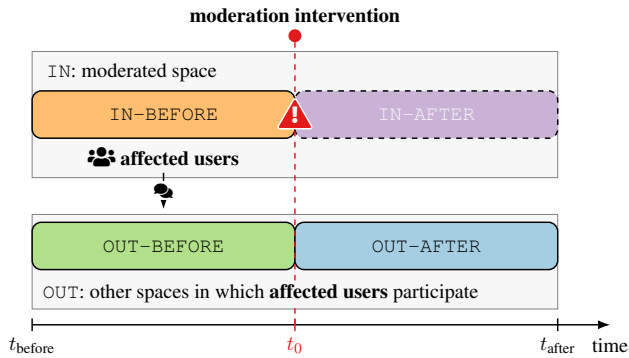


Figure 1: For an intervention occurring at time t_0 , we identify four data slices: IN-BEFORE and IN-AFTER (if available) capture activity in the moderated space before and after the intervention, while OUT-BEFORE and OUT-AFTER capture activity by the same users outside that space.

longer-term intervention effects (Trujillo and Cresci 2022; Horta Ribeiro, Cheng, and West 2023; Kumarswamy, Singhal, and Nilizadeh 2023). While much of this work focuses on user- or community-level interventions, similar post-hoc designs have also been applied to content-level moderation, such as warning labels on disputed posts, to study their effects on perceived credibility and user engagement, sometimes revealing unintended or counterintuitive outcomes (Zannettou 2021).

Beyond descriptive assessment, the outcomes of such post-hoc analyses are often used to derive ground-truth labels that enable predictive approaches. In this setting, intervention effects estimated from pre- and post-intervention data serve as targets for models trained solely on pre-intervention signals, with the goal of anticipating how users, content, or communities will respond to future moderation actions. Prior work has used this approach to predict user-level responses, including abandonment (Tessa et al. 2025b) or evasion following bans (Niverthi, Verma, and Kumar 2022), as well as changes in activity, toxicity, and participation diversity (Tessa et al. 2025c). Other studies operate at the community level, aiming to identify communities likely to face moderation actions based on structural or behavioral indicators (Habib et al. 2022). Complementary work focuses on content-level prediction, leveraging metadata such as posting context, author history, and temporal features to forecast whether posts will later be moderated (Kurdi, Albadi, and Mishra 2020; Chandrasekharan et al. 2019; Paudel et al. 2023).

Overall, these works illustrate how intervention-centered datasets not only support retrospective evaluation, but also underpin predictive models that seek to anticipate moderation outcomes and inform proactive strategies.

Methodology

Data Model

We model content moderation as a discrete, time-stamped intervention that affects a set of users in a moderated

space (e.g., a community or platform). Figure 1 provides an overview of the data model. Accordingly, for a given intervention, we identify a cohort of affected users and partition their activity along two orthogonal dimensions: (i) **time** (before vs. after the intervention) and (ii) **space** (inside vs. outside the moderated space). This results in four possible data slices: IN-BEFORE, IN-AFTER, OUT-BEFORE, and OUT-AFTER. The two IN slices capture activity within the space where moderation occurred, while the two OUT slices capture activity by the same users elsewhere (e.g., another part of the same platform, or a different platform altogether). A key motivation for this design is that, for some interventions (e.g., community bans), the IN-AFTER slice is structurally unavailable, as the moderated space no longer exists after the intervention. In such cases, incorporating OUT activity before and after the intervention still enables the analysis of post-intervention and downstream effects.

Selection of Moderation Interventions

We conducted a targeted review of prior work on content moderation, focusing on interventions that have been repeatedly analyzed or highlighted as particularly relevant in the existing literature. For each study, we recorded the type of analyzed intervention and evaluated the feasibility of collecting the corresponding data under our data model. A limited number of more recent cases were additionally identified through publicly available resources, such as the subreddit `r/reclassified`³, which tracks newly imposed moderation actions on Reddit. Based on this process, we selected a longitudinal set of 25 moderation interventions carried out between 2015 and 2023, spanning two platforms—Reddit and Voat—and covering multiple intervention types, including community bans, quarantines, and post removals. The set of considered interventions is reported in the left-most half of Table 1. This selection is constrained by the existing literature on moderation interventions and by data availability, and we acknowledge that it is neither exhaustive nor uniformly distributed across time, platforms, or intervention types. Nonetheless, it provides a grounded and extensive resource for downstream analyses, while leaving room for expansion to additional interventions and platforms as future work.

Data Collection and Preparation

For each selected intervention, we applied the following standardized pipeline to collect and prepare the data, also outlined in Figure 2:

1. **IN data collection.** Based on the intervention timestamp t_0 , we retrieved raw data from the moderated space covering a fixed window of three months before and after the intervention, when available. With reference to Figure 1, this means that $t_{\text{after}}, t_{\text{before}} = t_0 \pm 3$ months. The data was collected from publicly available resources. Specifically, Reddit data was collected from a torrent file,⁴ while Voat data from a public Zenodo repository by Mekacher

³<https://www.reddit.com/r/reclassified/>

⁴<https://academictorrents.com/details/9c263fc85366c1ef8f5bb9da0203f4c8c8db75f4>

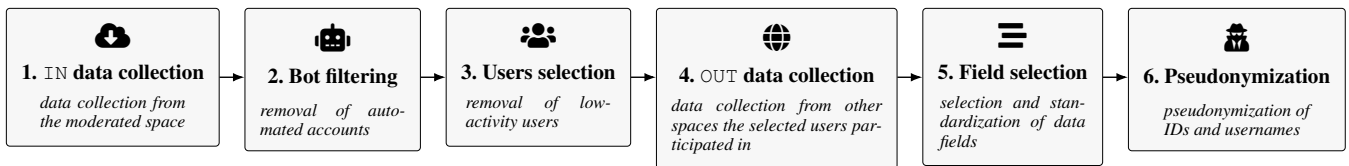


Figure 2: Overview of the six steps of the data collection and processing pipeline used to construct the dataset.

and Papasavva (2022), with CC BY 4.0 (redistributable) license.⁵

2. **Bot filtering.** Following prior work, we removed bot accounts by excluding users who posted two or more comments with identical timestamps (Hurtado, Ray, and Marculescu 2019; Cima et al. 2025b). We further filtered out self-declared bots and conducted a manual validation of the bot filtering process.
3. **Selection of affected users.** We retained only users who posted at least ten messages in the moderated space in the three months preceding the intervention. This step filters out low-activity accounts and focuses the dataset on users meaningfully affected by the moderation action.
4. **OUT data collection.** In cases when the IN-AFTER data slice is unavailable, we collected activity by the affected users outside the moderated space, such as in other communities on the same platform or on alternative platforms to which those users migrated.
5. **Field selection and standardization.** From the available raw data, we selected a subset of fields based on relevance and consistency. Because TBBT spans multiple years and platforms with evolving data schemas, this step harmonizes field names and formats, providing longitudinal consistency and alignment across Reddit and Voat, to the extent possible. TBBT field names follow Reddit’s naming conventions, since it accounts for the majority of the dataset. Appendix Table 2 reports the full list and description of provided fields.
6. **Pseudonymization.** To protect user privacy, we de-identified TBBT by pseudonymizing all identifiers via a deterministic cryptographic hash applied to all IDs and usernames, both in the metadata and message text. This step preserves internal consistency while mitigating re-identification risks.

Data Structure, Access, and FAIR Principles

TBBT is structured to mirror the intervention-centered data model described earlier. The overall dataset structure is outlined in Figure 3. At the top level, it comprises four folders, one per intervention type. Within each folder, data are further organized into intervention-level subfolders, compressed for efficient storage and access. Each of these compressed subfolders corresponds to a single moderation intervention (i.e., one row of Table 1). Each intervention-level subfolder contains one standardized, line-delimited JSON file for each slice of data available for that intervention,

⁵<https://zenodo.org/records/5841668>

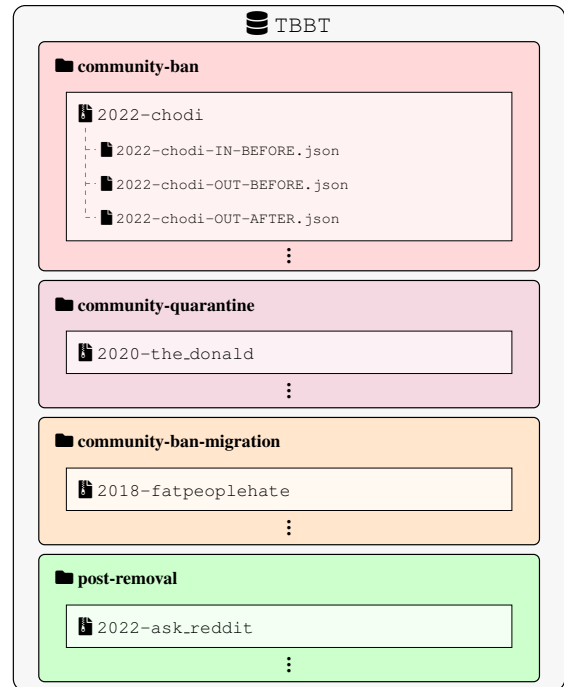


Figure 3: Dataset structure, showing the top-level folders by intervention type, the intervention-level compressed archives, and the standardized JSON files corresponding to the available data slices for each intervention.

as per Table 1. In particular, the IN-BEFORE file is always available, while the IN-AFTER, OUT-BEFORE, and OUT-AFTER are provided optionally depending on the type of intervention and data availability. Each line in these files represents a single comment encoded as a JSON object with its associated attributes. The attributes included in TBBT are a subset of those provided by the Python Reddit API Wrapper (PRAW).⁶ TBBT fully adheres to the FAIR⁷ principles:

- **Findable:** The dataset is publicly available on Zenodo with a persistent DOI: <https://doi.org/10.5281/zenodo.18245669>.
- **Accessible:** The dataset is freely accessible via a recognized repository with clear licensing agreement that ensures long-term availability and responsible use.
- **Interoperable:** All data are provided in a standardized JSON format, ensuring compatibility and integra-

⁶<https://praw.readthedocs.io/en/stable/>

⁷<https://force11.org/info/the-fair-data-principles/>

tion with other tools and datasets.

- **Re-usable:** The dataset comes with comprehensive documentation that supports future research.

Dataset Description

Table 1 provides a comprehensive overview of TBBT. The left set of columns summarizes key attributes of each moderation intervention, including its date of application, target, type, moderated space, and platform. The right set of columns details the data available for that intervention across the four data slices defined by our model.

Available Data Slices per Intervention

The *IN-BEFORE* slice is available for all interventions, whereas the availability of the remaining slices depends on the intervention type, as discussed in the following.

Post removals and community quarantines. For interventions that do not completely shut a community, we are able to provide both *IN-BEFORE* and *IN-AFTER* data. This situation represents a convenient setting for analyzing the effects of moderation within the affected space. In TBBT, interventions of this kind are post removals and community quarantines. Post removals correspond to the deletion of individual items of content (Jhaver, Rathi, and Saha 2024), while community quarantines on Reddit restrict a community’s visibility and accessibility without removing it, typically by adding warning interstitials and limiting discovery (Chandrasekharan et al. 2022). Because activity within the moderated space remains observable after these interventions, TBBT does not include *OUT* data slices for this group.

Community bans. After community bans, the moderated space becomes inaccessible and no post-intervention activity within the community can occur. Consequently, *IN-AFTER* data are structurally unavailable. In these cases, for each user active in the *IN-BEFORE* slice, we collect their activity across the rest of the platform during the three months preceding and following the intervention. These data form the *OUT-BEFORE* and *OUT-AFTER* slices. This design enables the study of moderation effects beyond the banned space, possibly capturing within-platform spillover dynamics (Trujillo and Cresci 2022).

Migrations following community bans. For a subset of high-profile community bans, a considerable number of affected users migrated to the alternative Reddit-like platform Voat, where they re-created the banned communities. Because many users retained the same usernames across platforms, this setting enables direct observation of behavioral changes associated with cross-platform migration following a ban (Monti et al. 2023). In these cases, TBBT includes *IN-BEFORE* data capturing activity within the later-banned Reddit community prior to the intervention, and *OUT-AFTER* data capturing activity in the newly created Voat community after the ban. For this type of intervention, Table 1 reports the same number of users in the *IN-BEFORE* and *OUT-AFTER* slices, as only users with a matched username across platforms are included. This configuration supports analyses of moderation effects that

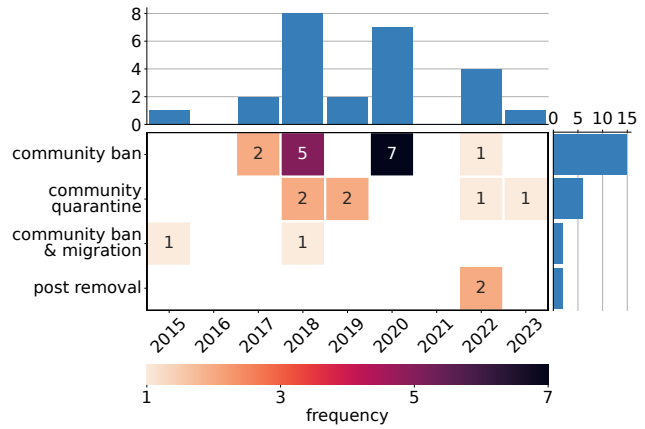


Figure 4: Frequency of interventions in the TBBT dataset, by type (y axis) and year (x axis) (central heatmap), with marginal distributions (top and right bar charts).

unfold through platform migration rather than within the original moderated space and platform (Horta Ribeiro et al. 2021).

Finally, TBBT includes some noteworthy cases in which the same community is affected by multiple moderation interventions and therefore appears in more than one row of Table 1. In detail, *r/The_Donald* and *r/ChapoTrapHouse* both received a quarantine followed by a definitive ban (Trujillo and Cresci 2022; Shen and Rosé 2022). Sequences of interventions applied to the same space enable the study of cumulative, compound, or adaptive effects of moderation over time, as well as how communities and users respond to repeated enforcement actions. In addition, for *r/greatawakening* we provide two distinct post-ban configurations: (i) one capturing post-intervention activity of affected users on the original platform, and (ii) another capturing activity following migration to Voat. As a result, *r/greatawakening*’s ban is represented twice in TBBT, with different *OUT-AFTER* slices. In the migration case, the corresponding *IN-BEFORE* slice is also adjusted to include only users who later migrated, conveniently enabling analyses of cross-platform behavioral change.

Dataset Overview and Descriptive Statistics

The data reported in Table 1 show that TBBT exhibits substantial heterogeneity in the scale of the moderated communities and the corresponding affected activity. The number of affected users ranges from a few hundred to approximately 274K, while the volume of comments spans from a few thousand to over 11 million. This variation reflects the diversity of the targeted spaces, from large, mainstream subreddits such as *r/Ask.Reddit* and *r/science* to smaller, fringe communities such as *r/ShitNeoconsSay* and *r/DebateAltRight*. These communities also span a wide range of thematic domains, ranging from general-purpose or informational communities (e.g., *r/Ask.Reddit*, *r/science*), to political and ideological spaces (e.g., *r/The_Donald*,

					provided data							
moderation intervention					IN-BEFORE		IN-AFTER		OUT-BEFORE		OUT-AFTER	
date t_0	target	type	moderated space	platform(s)	👤↓	💬	👤	💬	👤	💬	👤	💬
1-30 Jun 22	post	removal	r/AskReddit	Reddit	273,792	11,661,920	217,978	7,343,707	–	–	–	–
26 Jun 19	community	quarantine	r/TheDonald	Reddit	22,410	1,939,536	17,134	1,526,916	–	–	–	–
6 Aug 19	community	quarantine	r/ChapoTrapHouse	Reddit	11,922	866,206	8,855	601,161	–	–	–	–
28 Sep 18	community	quarantine	r/Braincels	Reddit	7,414	1,116,210	2,397	385,258	–	–	–	–
29 Jun 20	community	ban	r/ChapoTrapHouse	Reddit	7,153	865,937	X	X	6,743	1,272,364	6,324	1,279,975
1-30 Jun 22	post	removal	r/science	Reddit	5,028	100,346	3,749	48,236	–	–	–	–
12 Sep 18	community	ban	r/greatawakening	Reddit	4,550	329,183	X	X	3,570	690,552	2,956	620,307
23 Mar 22	community	quarantine	r/GenZedong	Reddit	3,677	226,832	2,176	39,053	–	–	–	–
7 Nov 17	community	ban	r/Incels	Reddit	2,862	273,009	X	X	2,551	841,379	2,008	563,354
29 Jun 20	community	ban	r/TheDonald	Reddit	2,797	221,682	X	X	2,364	680,784	1,948	488,109
10 Sep 18	community	ban	r/MillionDollarExtreme	Reddit	2,121	129,276	X	X	2,049	536,408	1,762	401,687
28 Sep 18	community	quarantine	r/TheRedPill	Reddit	1,209	36,168	674	11,778	–	–	–	–
10 Jun 15	community	ban & migration	r/fatpeoplehate	Reddit → Voat	991	111,751	X	X	–	–	991	39,427
24 Mar 22	community	ban	r/Chodi	Reddit	956	43,547	X	X	942	631,445	760	544,604
21 Mar 18	community	ban	r/DarkNetMarkets	Reddit	913	32,712	X	X	756	119,036	394	16,348
29 Jun 20	community	ban	r/ConsumeProduct	Reddit	725	26,786	X	X	660	207,087	501	138,251
29 Jun 20	community	ban	r/GenderCritical	Reddit	685	40,976	X	X	570	94,239	410	72,306
23 Feb 23	community	quarantine	r/goblin	Reddit	608	20,840	402	8,995	–	–	–	–
14 Mar 18	community	ban	r/SanctionedSuicide	Reddit	583	27,002	X	X	450	142,493	311	52,442
29 Jun 20	community	ban	r/DarkHumorAndMemes	Reddit	559	15,594	X	X	533	185,567	472	139,739
12 Sep 18	community	ban & migration	r/greatawakening	Reddit → Voat	533	56,780	X	X	–	–	533	16,344
15 Aug 17	community	ban	r/PhysicalRemoval	Reddit	328	12,921	X	X	325	370,492	269	222,245
29 Jun 20	community	ban	r/DebateAltRight	Reddit	250	12,093	X	X	218	53,216	165	33,548
21 Mar 18	community	ban	r/GunsForSale	Reddit	235	5,837	X	X	231	33,758	193	5,222
29 Jun 20	community	ban	r/ShitNeoconsSay	Reddit	160	4,592	X	X	142	39,813	87	25,351

Table 1: Moderation interventions included in TBBT. For each intervention, we report its date of application, the target and type, the platform and communities affected, as well as the number of users (👤) and comments (💬) made available across the four data slices (IN/OUT and BEFORE/AFTER). The cross symbol (X) indicates structurally unavailable data in the IN-AFTER slice. In such cases, OUT data is provided instead. Table rows are ordered by descending number of affected users (↓).

r/ChapoTrapHouse, r/GenZedong, r/Chodi), to fringe or problematic communities centered on hostility, exclusion, or harassment (e.g., r/Incels, r/TheRedPill, r/fatpeoplehate, r/DebateAltRight), as well as communities associated with harmful or high-risk topics such as self-harm, extremism, illicit activity, or violence (e.g., r/SanctionedSuicide, r/DarkNetMarkets, r/GunsForSale). Importantly, the underlying motivations for moderation also vary. Some interventions arise from violations of community-specific norms and are typically enforced by volunteer moderators of some specific subreddits, whereas others result from clear breaches of platform-wide policies and are imposed by Reddit staff. The latter frequently occur in response to illegal activity, toxic behavior, harassment, hate speech, or incitement to violence. Together, these differences highlight the heterogeneity and complexity of the content moderation landscape, a relevant portion of which is captured within TBBT.

Figure 4 further illustrates heterogeneity in the temporal and typological distribution of interventions included in TBBT. Community bans and quarantines are the most frequent interventions, accounting for 15 (62.5% of all interventions) and 6 (24%) cases, respectively. Migrations and post removals are less represented, mirroring their lower frequency both in practice and in the existing literature (Horta Ribeiro et al. 2021; Jhaver, Rathi, and Saha 2024). The year with the highest concentration of interventions in TBBT is 2018, which includes five bans, two quarantines, and one ban followed by migration, for a total of eight interventions (32%). Overall, the dataset com-

prises well-studied, high-profile interventions with more recent cases that have received little or no prior attention, such as the quarantines of r/goblin (2023) and r/GenZedong (2022), and the ban of r/Chodi (2022). Notably, intervention frequency does not directly correspond to impact. For instance, the two post removals in TBBT affect some of the largest user groups, with approximately 274K and 5K users, respectively.

Figure 5 summarizes changes in activity associated with each intervention by comparing pre- and post-intervention volumes of comments (top) and active users (bottom). For interventions with post-intervention activity—community quarantines (Q), bans with migrations (M), and post removals (R)—the figure compares IN-BEFORE and IN-AFTER, except for the two migration bans, where IN-BEFORE is compared to OUT-AFTER. For community bans (B), the right panel reports comparisons between OUT-BEFORE and OUT-AFTER activity. Across nearly all interventions, both the number of comments and the number of active users decrease following moderation, regardless of intervention type or community size, though the magnitude of the change varies substantially across cases. These descriptive patterns are consistent with prior findings reported for specific interventions (Trujillo and Cresci 2022) and suggest that moderation may be generally associated with reduced user activity and participation across a broad range of contexts.

Use Cases

We envision TBBT to support a wide range of research tasks in the study of online content moderation, as out-

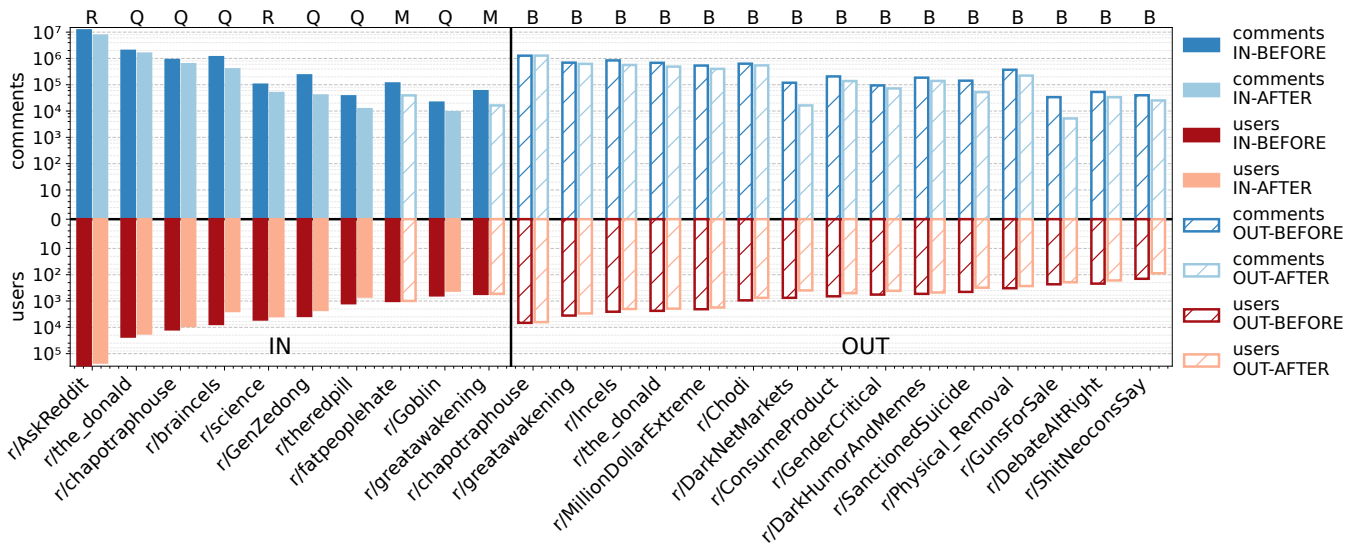


Figure 5: Number of comments (top panels) and active users (bottom panels) before and after each moderation intervention. For each intervention, bars compare pre- and post-intervention activity. The left panels show comparisons within the moderated space for interventions where IN-AFTER data are available. In case of bans with migrations (M), IN-BEFORE data is compared to OUT-AFTER data. The right panels show comparisons for community bans (B) using OUT-BEFORE and OUT-AFTER data. The y axis is on a logarithmic scale to accommodate the large variation in activity volumes across communities. Subreddits on the x axis are ordered from left to right by decreasing number of affected users.

lined below. Across all use cases and tasks, the dataset enables researchers to develop and validate methods consistently across multiple interventions, supporting large-scale and comparative analyses that are difficult to conduct with the existing fragmented resources. The listed use cases are not exhaustive, and we expect the dataset to enable additional lines of inquiry beyond those discussed here.

Assessing effects and effectiveness. TBBT enables systematic analyses of how moderation interventions affect user (Horta Ribeiro et al. 2025) and community behavior (Chandrasekharan et al. 2022), supporting both descriptive and quasi-experimental evaluations of intervention outcomes. By providing aligned pre- and post-intervention data, scholars can measure short- and medium-term changes in activity, engagement, participation patterns (Trujillo and Cresci 2022), and other behavioral indicators (Tessa et al. 2025c), and compare the effectiveness of different intervention types. The dataset further supports analyses of heterogeneity, allowing effects to be examined across users, communities, platforms, and intervention characteristics. Furthermore, because the dataset spans interventions from 2015 to 2023 and includes multiple instances of each intervention type, it enables longitudinal analyses of moderation practices, making it possible to assess whether the effects of similar interventions remain stable over time or evolve alongside platforms, policies, and user behavior.

Assessing fairness, consistency, and equity. TBBT supports research on the fairness and consistency of moderation practices by enabling comparisons across users, communities, platforms, and intervention instances. For example, by analyzing IN-BEFORE activity, researchers can examine the behavioral and content-level signals that precede

moderation (Habib et al. 2022), shedding light on potential triggers and decision patterns underlying enforcement actions. Extending this analysis across multiple instances of the same intervention type on the same platform makes it possible to assess whether similar behaviors are treated consistently over time or across contexts, and to identify systematic differences in how moderation is applied. In turn, such analyses can reveal disparities in moderation enforcement or its outcomes, and inform studies of bias, equity, and accountability (Lee et al. 2019).

Assessing the role of context. By spanning multiple intervention types, platforms, and communities, TBBT enables comparative analyses that examine how contextual factors shape both moderation decisions and their outcomes (Shen and Rosé 2022; Chandrasekharan et al. 2022; Cresci, Trujillo, and Fagni 2022). Researchers can study how characteristics such as community size and norms, topical focus, and participation habits mediate the application and effects of moderation interventions, and whether similar interventions yield different outcomes across contexts. This contextual perspective helps identify regularities and divergences in moderation practices, disentangling effects driven by the intervention from those shaped by social and organizational context.

Predictive modeling and early-warning systems. Beyond retrospective analyses, TBBT supports predictive approaches that aim to anticipate the outcomes of moderation interventions before they occur. By using pre-intervention signals as inputs and post-intervention outcomes as ground-truth, scholars can train models to forecast user-level responses such as disengagement, migration, or behavioral change (Tessa et al. 2025b), as well as community-level ef-

fects including shifts in activity, toxicity, or participation diversity (Tessa et al. 2025c). Prior work in this area has explored such tasks in a limited number of settings, typically focusing on a single intervention type or platform (Niverthi, Verma, and Kumar 2022; Habib et al. 2022). However, the breadth and longitudinal coverage of TBBT enable large-scale evaluations of predictive models, including assessments of their robustness and generalization across time, intervention types, and platforms. This, in turn, opens the door to the development and validation of early-warning systems that can inform more proactive and context-aware moderation strategies.

Empowering transparency, accountability, and governance. By linking moderation interventions to rich behavioral context before and after enforcement, TBBT also supports studies on transparency, accountability, and regulatory compliance by complementing existing transparency initiatives that primarily provide metadata about moderation decisions but lack information about user activity and responses (Trujillo, Fagni, and Cresci 2025; Kaushal et al. 2024). For example, researchers can integrate this dataset with external data sources such as transparency disclosures and platform policies to assess the consistency between actual moderation actions and the declared enforcement practices or platform rules in place at the time of the intervention (Tessa et al. 2025a). To this regard, TBBT can inform both scholarly and policy-oriented investigations into how moderation interventions shape online ecosystems and how governance mechanisms operate at scale.

Methodological development. While the preceding use cases focus on substantively oriented questions about moderation outcomes, TBBT also supports methodological research on how such effects are measured. The intervention-centered structure and standardized pre- and post-intervention windows enable systematic comparisons of alternative analytical approaches, including simple before-after designs (Cima et al. 2025b), interrupted time series analyses (Habib and Nithyanand 2022; Broniatowski et al. 2025), and more complex counterfactual modeling strategies (Slaughter et al. 2025; Trujillo and Cresci 2022). Researchers can use the dataset to study the sensitivity of results to modeling choices such as window length, temporal aggregation, outcome definition, or the inclusion of external activity as a comparison signal. By offering a shared empirical basis with multiple interventions across time and contexts, the dataset supports benchmarking, robustness checks, and methodological validation, fostering more reliable and transparent approaches to measuring content moderation effects.

Extensions for causal analyses. Finally, TBBT can serve as a foundation for more robust causal analyses by supporting the construction of external control groups, as done in some recent works (Seckin et al. 2025). For each moderated intervention and space, interested scholars could identify independent but comparable and unmoderated spaces—e.g., matched on characteristics such as topic, size, or user composition—and use them as controls within quasi-experimental designs (Cima et al. 2025b). While not included in the current TBBT release, the dataset’s

intervention-centered structure supports these extensions and can strengthen causal claims, enabling more rigorous assessment of whether observed effects are attributable to moderation interventions.

Limitations and Future Work

TBBT is designed to support a broad range of analyses, but faces some limitations. These also point to valuable directions for future work. First, the dataset exhibits a platform and intervention skew, with a predominant focus on Reddit and on community bans and quarantines. This reflects both constraints on data access and the emphasis of existing research. As such, future extensions of the dataset could incorporate additional platforms and a wider spectrum of interventions, particularly softer or hybrid moderation mechanisms. Second, the present version of TBBT is observational in nature, which limits the extent to which causal claims can be drawn directly from this data. While the intervention-centered design supports quasi-experimental analyses, robust causal estimates require the construction of appropriate control groups or counterfactuals. As discussed in the use cases, the dataset supports such extensions, and we encourage researchers to augment it with matched control spaces or external comparison groups. Then, for certain interventions (e.g., community bans), post-intervention activity within the moderated space (*IN-AFTER*) is structurally unavailable, as the space itself no longer exists after the moderation. This is an inherent property of deplatforming interventions rather than a limitation of our data collection process. Nonetheless, to mitigate this limitation, TBBT explicitly includes activity by affected users outside the moderated space, enabling analyses of post-intervention behavior, spillover effects, and migrations. Furthermore, the dataset introduces a degree of user selection bias by focusing on users with a minimum level of pre-intervention activity. This choice reduces noise by focusing on those users meaningfully exposed to the moderation, but it may underrepresent low-activity users. Additionally, the bot filtering step of our data preparation pipeline may not be exhaustive, meaning that some bots might be undetected. Finally, TBBT spans interventions from 2015 to 2023—a period during which platforms, policies, and user norms have evolved substantially. This temporal drift complicates direct comparisons across interventions conducted at different times. However, it also offers opportunities to study how moderation practices and their effects changed over time, providing a longitudinal perspective on the evolution of content moderation.

Conclusions

Research on online content moderation is constrained by limited data access and fragmented resources. To mitigate these issues, we introduced *The Big Ban Theory* (TBBT)—an intervention-centered dataset that aggregates pre- and post-moderation activity for a large set of moderation interventions across multiple years, platforms, and intervention types. By structuring data along orthogonal space and time dimensions, and explicitly accounting for cases where post-intervention data within the moderated space is unavail-

able, TBBT supports a broad range of descriptive, methodological, and predictive analyses. While the dataset has certain clear limitations, it provides a structured and extensible foundation for studying moderation interventions at scale. This resource will facilitate cumulative research on content moderation and support ongoing efforts to understand, evaluate, and improve moderation practices in online platforms.

Ethical Statement

Data included in TBBT originate from publicly available content on the source platforms. To mitigate privacy risks, we pseudonymized all user, content, and community identifiers, reducing risks of re-identification while preserving internal consistency for downstream analysis. Nevertheless, as with any dataset derived from online activity, residual re-identification risks remain, and the data should be handled accordingly. Moderation interventions can be socially and personally sensitive, and TBBT reflects interactions within communities and by users that were subject to moderation. As a consequence, the data may contain offensive, harmful, or otherwise triggering content. The dataset does not encode normative judgments about the appropriateness of moderation decisions, and analyses should be interpreted with care to avoid stigmatizing individuals or communities. Moreover, findings derived from this dataset should not be used to automate or justify punitive decisions without appropriate human oversight, as misuse could lead to unintended or harmful societal impacts. Finally, TBBT is released in accordance with FAIR principles and is intended exclusively for scientific research. Access and use are governed by terms of use that prohibit attempts at re-identification, or uses that could harm individuals or communities represented in the data. We expect researchers to adhere to these conditions and to established community norms for ethical research on online platforms.

Acknowledgments

This work is partly supported by the ERC project DEDUCE under grant #101113826, and by the European Union – Next Generation EU, Mission 4 Component 1, for project PIANO (CUP B53D23013290006).

References

Aslett, K.; Guess, A. M.; Bonneau, R.; Nagler, J.; and Tucker, J. A. 2022. News credibility labels have limited average effects on news diet quality and fail to reduce misperceptions. *Science Advances*, 8(18).

Bail, C. A.; Argyle, L. P.; Brown, T. W.; Bumpus, J. P.; Chen, H.; Hunzaker, M. F.; Lee, J.; Mann, M.; Merhout, F.; and Volfovsky, A. 2018. Exposure to opposing views on social media can increase political polarization. *PNAS*, 115(37).

Baumgartner, J.; Zannettou, S.; Keegan, B.; Squire, M.; and Blackburn, J. 2020. The Pushshift Reddit dataset. In *AAAI ICWSM*.

Broniatowski, D. A.; Zhong, W.; Simons, J. R.; Jamison, A. M.; Dredze, M.; and Abrams, L. C. 2025. Explaining Twitter’s inability to effectively moderate content during the COVID-19 pandemic. *Scientific Reports*, 15(1).

Caplan, R.; and Gillespie, T. 2020. Tiered governance and demonetization: The shifting terms of labor and compensation in the platform economy. *Social Media + Society*, 6(2).

Chandrasekharan, E.; Gandhi, C.; Mustelier, M. W.; and Gilbert, E. 2019. Crossmod: A cross-community learning-based system to assist Reddit moderators. In *ACM CSCW*.

Chandrasekharan, E.; Jhaver, S.; Bruckman, A.; and Gilbert, E. 2022. Quarantined! Examining the effects of a community-wide moderation intervention on Reddit. *ACM TOCHI*, 29(4).

Chuai, Y.; Tian, H.; Pröllochs, N.; and Lenzini, G. 2024. Did the roll-out of community notes reduce engagement with misinformation on X/Twitter? In *ACM CSCW*.

Cima, L.; Miaschi, A.; Trujillo, A.; Avvenuti, M.; Dell’Orletta, F.; and Cresci, S. 2025a. Contextualized counterspeech: Strategies for adaptation, personalization, and evaluation. In *ACM Web Conference*.

Cima, L.; Tessa, B.; Trujillo, A.; Cresci, S.; and Avvenuti, M. 2025b. Investigating the heterogeneous effects of a massive content moderation intervention via Difference-in-Differences. *OSNEM*, 48.

Cima, L.; Trujillo, A.; Avvenuti, M.; and Cresci, S. 2024. The Great Ban: Efficacy and unintended consequences of a massive deplatforming operation on Reddit. In *ACM WebSci Workshops*.

Copland, S. 2020. Reddit quarantined: Can changing platform affordances reduce hateful material online? *Internet Policy Review*, 9(4).

Costello, T. H.; Pennycook, G.; and Rand, D. G. 2024. Durably reducing conspiracy beliefs through dialogues with AI. *Science*, 385(6714).

Cresci, S.; Trujillo, A.; and Fagni, T. 2022. Personalized interventions for online moderation. In *ACM Hypertext*.

Garland, J.; Ghazi-Zahedi, K.; Young, J.-G.; Hébert-Dufresne, L.; and Galesic, M. 2022. Impact and dynamics of hate and counter speech online. *EPJ Data Science*, 11(1).

Gillespie, T. 2018. *Custodians of the Internet: Platforms, Content Moderation, and the Hidden Decisions That Shape Social Media*. Yale University Press.

Grimmelmann, J. 2015. The virtues of moderation. *Yale Journal of Law and Technology*, 17: 42.

Habib, H.; Musa, M. B.; Zaffar, M. F.; and Nithyanand, R. 2022. Are proactive interventions for Reddit communities feasible? In *AAAI ICWSM*.

Habib, H.; and Nithyanand, R. 2022. Exploring the magnitude and effects of media influence on Reddit moderation. In *AAAI ICWSM*.

Horta Ribeiro, M.; Cheng, J.; and West, R. 2023. Automated content moderation increases adherence to community guidelines. In *ACM Web Conference*.

Horta Ribeiro, M.; Jhaver, S.; Cluet-i Martinell, J.; Reignier-Tayar, M.; and West, R. 2025. Deplatforming norm-violating influencers on social media reduces overall online attention toward them. In *ACM CSCW*.

- Horta Ribeiro, M.; Jhaver, S.; Zannettou, S.; Blackburn, J.; Stringhini, G.; De Cristofaro, E.; and West, R. 2021. Do platform migrations compromise content moderation? Evidence from r/The_Donald and r/Incels. In *ACM CSCW*.
- Hurtado, S.; Ray, P.; and Marculescu, R. 2019. Bot detection in Reddit political discussion. In *ACM SocialSense*.
- Jahn, L.; Rendsvig, R. K.; Flammini, A.; Menczer, F.; and Hendricks, V. F. 2025. A perspective on friction interventions to curb the spread of misinformation. *npj Complexity*, 2(1).
- Jaurisch, J.; Ohme, J.; and Klinger, U. 2024. Enabling research with publicly accessible platform data: Early DSA compliance issues and suggestions for improvement. Technical report, Weizenbaum Institute.
- Jhaver, S.; Boylston, C.; Yang, D.; and Bruckman, A. 2021. Evaluating the effectiveness of deplatforming as a moderation strategy on Twitter. In *ACM CSCW*.
- Jhaver, S.; Rathi, H.; and Saha, K. 2024. Bystanders of online moderation: Examining the effects of witnessing post-removal explanations. In *ACM CHI*.
- Kaushal, R.; Van De Kerkhof, J.; Goanta, C.; Spanakis, G.; and Iamnitchi, A. 2024. Automated transparency: A legal and empirical analysis of the Digital Services Act Transparency Database. In *ACM FAccT*.
- Kumarswamy, N.; Singhal, M.; and Nilizadeh, S. 2023. Impact of Stricter Content Moderation on Parler’s Users’ Discourse. *arXiv:2310.08844*.
- Kurdi, M.; Albadi, N.; and Mishra, S. 2020. “Video Unavailable”: Analysis and prediction of deleted and moderated YouTube videos. In *IEEE/ACM ASONAM*.
- Lee, M. K.; Jain, A.; Cha, H. J.; Ojha, S.; and Kusbit, D. 2019. Procedural justice in algorithmic fairness: Leveraging transparency and outcome control for fair algorithmic mediation. In *ACM CSCW*.
- Ling, C.; Gummadi, K. P.; and Zannettou, S. 2023. “Learn the facts about COVID-19”: Analyzing the use of warning labels on TikTok videos. In *AAAI ICWSM*.
- Mekacher, A.; and Papasavva, A. 2022. “I Can’t Keep It Up.” A dataset from the defunct Voat.co news aggregator. In *AAAI ICWSM*.
- Mimizuka, K.; Brown, M. A.; Yang, K.-C.; and Lukito, J. 2025. Post-Post-API Age: Studying digital platforms in scant data access times. *arXiv:2505.09877*.
- Monti, C.; Cinelli, M.; Valensise, C.; Quattrociocchi, W.; and Starnini, M. 2023. Online conspiracy communities are more resilient to deplatforming. *PNAS Nexus*, 2(10).
- Niverthi, M.; Verma, G.; and Kumar, S. 2022. Characterizing, detecting, and predicting online ban evasion. In *ACM Web Conference*.
- Papakyriakopoulos, O.; and Goodman, E. 2022. The impact of Twitter labels on misinformation spread and user engagement: Lessons from Trump’s election tweets. In *ACM Web Conference*.
- Paudel, P.; Blackburn, J.; De Cristofaro, E.; Zannettou, S.; and Stringhini, G. 2023. Lambretta: Learning to rank for Twitter soft moderation. In *IEEE S&P*.
- Pennycook, G.; Bear, A.; Collins, E. T.; and Rand, D. G. 2020. The implied truth effect: Attaching warnings to a subset of fake news headlines increases perceived accuracy of headlines without warnings. *Management Science*, 66(11).
- Russo, G.; Verginer, L.; Horta Ribeiro, M.; and Casiraghi, G. 2023. Spillover of antisocial behavior from fringe platforms: The unintended consequences of community banning. In *AAAI ICWSM*.
- Seckin, O. C.; Pote, M.; Nwala, A. C.; Yin, L.; Luceri, L.; Flammini, A.; and Menczer, F. 2025. Labeled datasets for research on information operations. In *AAAI ICWSM*.
- Shahi, G. K.; Tessa, B.; Trujillo, A.; and Cresci, S. 2025. A year of the DSA Transparency Database: What it (does not) reveal about platform moderation during the 2024 European Parliament election. In *AAAI ICWSM Workshops*.
- Shen, Q.; and Rosé, C. P. 2022. A tale of two subreddits: Measuring the impacts of quarantines on political engagement on Reddit. In *AAAI ICWSM*.
- Slaughter, I.; Peytavin, A.; Ugander, J.; and Saveski, M. 2025. Community notes reduce engagement with and diffusion of false information online. *PNAS*, 122(38).
- Tessa, B.; Amram, D.; Monreale, A.; and Cresci, S. 2025a. Improving regulatory oversight in online content moderation. *ECML-PKDD Workshops*.
- Tessa, B.; Cima, L.; Trujillo, A.; Avvenuti, M.; and Cresci, S. 2025b. Beyond trial-and-error: Predicting user abandonment after a moderation intervention. *Engineering Applications of Artificial Intelligence*, 162.
- Tessa, B.; Moreo, A.; Cresci, S.; Fagni, T.; and Sebastiani, F. 2025c. Quantifying feature importance for online content moderation. *arXiv:2510.19882*.
- Trujillo, A.; and Cresci, S. 2022. Make Reddit Great Again: Assessing community effects of moderation interventions on r/The_Donald. In *ACM CSCW*, 1–28.
- Trujillo, A.; and Cresci, S. 2023. One of Many: Assessing User-level Effects of Moderation Interventions on r/The_Donald. In *ACM WebSci*.
- Trujillo, A.; Fagni, T.; and Cresci, S. 2025. The DSA Transparency Database: Auditing self-reported moderation actions by social media. In *ACM CSCW*.
- Trujillo, M. Z.; Rosenblatt, S. F.; de Anda Jáuregui, G.; Moog, E.; Samson, B. P. V.; Hébert-Dufresne, L.; and Roth, A. M. 2021. When the Echo Chamber Shatters: Examining the Use of Community-Specific Language Post-Subreddit Ban. In *ACL-IJCNLP Workshops*.
- Zannettou, S. 2021. “I Won the Election!”: An empirical analysis of soft moderation interventions on Twitter. In *AAAI ICWSM*.

Paper Checklist

1. General items.
 - (a) Would answering this research question advance science without violating social contracts, such as violating privacy norms, perpetuating unfair profiling, exacerbating the socio-economic divide, or implying disrespect to societies or cultures? [Yes](#)
 - (b) Do your main claims in the abstract and introduction accurately reflect the paper's contributions and scope? [Yes](#)
 - (c) Do you clarify how the proposed methodological approach is appropriate for the claims made? [Yes, we describe these aspects in Section *Methodology*.](#)
 - (d) Do you clarify what are possible artifacts in the data used, given population-specific distributions? [Yes, we describe these aspects in Sections *Ethical Considerations* and *Limitations and Future Work*.](#)
 - (e) Did you describe the limitations of your work? [Yes, we describe these aspects in Section *Limitations and Future Work*.](#)
 - (f) Did you discuss any potential negative societal impacts of your work? [Yes, we describe these aspects in Section *Ethical Considerations*.](#)
 - (g) Did you discuss any potential misuse of your work? [Yes, we describe these aspects in Section *Ethical Considerations*.](#)
 - (h) Did you describe steps taken to prevent or mitigate potential negative outcomes of the research, such as data and model documentation, data anonymization, responsible release, access control, and the reproducibility of findings? [Yes, these aspects are described in Sections *Methodology* and *Ethical Considerations*.](#)
 - (i) Have you read the ethics review guidelines and ensured that your paper conforms to them? [Yes](#)
2. Hypotheses testing.
 - (a) Did you clearly state the assumptions underlying all theoretical results? [NA](#)
 - (b) Have you provided justifications for all theoretical results? [NA](#)
 - (c) Did you discuss competing hypotheses or theories that might challenge or complement your theoretical results? [NA](#)
 - (d) Have you considered alternative mechanisms or explanations that might account for the same outcomes observed in your study? [NA](#)
 - (e) Did you address potential biases or limitations in your theoretical framework? [NA](#)
 - (f) Have you related your theoretical results to the existing literature in social science? [NA](#)
 - (g) Did you discuss the implications of your theoretical results for policy, practice, or further research in the social science domain? [NA](#)
3. Theoretical proofs.
 - (a) Did you state the full set of assumptions of all theoretical results? [NA](#)
 - (b) Did you include complete proofs of all theoretical results? [NA](#)
4. Machine learning experiments.
 - (a) Did you include the code, data, and instructions needed to reproduce the main experimental results (either in the supplemental material or as a URL)? [NA](#)
 - (b) Did you specify all the training details (e.g., data splits, hyperparameters, how they were chosen)? [NA](#)
 - (c) Did you report error bars (e.g., with respect to the random seed after running experiments multiple times)? [NA](#)
 - (d) Did you include the total amount of compute and the type of resources used (e.g., type of GPUs, internal cluster, or cloud provider)? [NA](#)
 - (e) Do you justify how the proposed evaluation is sufficient and appropriate to the claims made? [NA](#)
 - (f) Do you discuss what is "the cost" of misclassification and fault (in)tolerance? [NA](#)
5. Usage of existing assets (e.g., code, data, models) and release of new assets.
 - (a) If your work uses existing assets, did you cite the creators? [Yes](#)
 - (b) Did you mention the license of the assets? [Yes, we specify the licence in the Zenodo repository.](#)
 - (c) Did you include any new assets in the supplemental material or as a URL? [Yes, we provide the Zenodo DOI for the dataset.](#)
 - (d) Did you discuss whether and how consent was obtained from people whose data you're using/curating? [Yes, these aspects are described in Sections *Methodology* and *Ethical Considerations*.](#)
 - (e) Did you discuss whether the data you are using/curating contains personally identifiable information or offensive content? [Yes, these aspects are described in Sections *Methodology* and *Ethical Considerations*.](#)
 - (f) If you are curating or releasing new datasets, did you discuss how you intend to make your datasets FAIR? [Yes, we provide the DOI and use established technologies to make the data FAIR, as described in Section *Methodology*.](#)
 - (g) If you are curating or releasing new datasets, did you create a Datasheet for the Dataset? [Yes, the Datasheet is included in the Zenodo repository.](#)
6. Crowdsourcing and research with human subjects.
 - (a) Did you include the full text of instructions given to participants and screenshots? [NA](#)
 - (b) Did you describe any potential participant risks, with mentions of Institutional Review Board (IRB) approvals? [NA](#)
 - (c) Did you include the estimated hourly wage paid to participants and the total amount spent on participant compensation? [NA](#)
 - (d) Did you discuss how data is stored, shared, and de-identified? [NA](#)

data field	description	pseudonymized
<code>comment_id</code>	Comment ID	✓
<code>created_utc</code>	Date and time (UNIX timestamp) on which the comment was created	
<code>edited</code>	Whether (and when) a comment has been edited after being created	
<code>stickied</code>	Boolean indicating whether the comment has been stickied by the moderators	
<code>selftext</code>	Full text content of the submission/comment	✓
<code>subreddit</code>	The name of the subreddit (or subverse) the comment was made in	
<code>link_id</code>	ID of the submission the comment belongs to	✓
<code>author</code>	Username of comment author	✓
<code>author_created_utc</code>	Creation time of author account (UNIX timestamp)	
<code>author_flair_richtext</code>	Content of the author’s flair	
<code>score</code>	Overall score (upvotes minus downvotes)	
<code>all_awardings</code>	List of awardings added to the comment	
<code>gilded</code>	The number of gild awards a comment has received	
<code>gildings</code>	Details of gild awards a comment has received	

Table 2: Standardized data fields included in TBBT, their brief description, and a flag indicating whether each field has been pseudonymized. In the `self_text` field, only user mentions have been pseudonymized.

Appendices

Available Fields and Pseudonymization

Table 2 lists all data fields included in TBBT, together with a brief description and an indication of whether each field has been pseudonymized. From the full set of available platform-specific fields, we selected a subset that balances informational richness with consistency across interventions, platforms, and nearly a decade of data collection. This process involved harmonizing field names and semantics to align data originating from different platforms and evolving data formats. All fields that may possibly contain identifiable information—such as user identifiers, content identifiers, and usernames—were processed using a deterministic cryptographic hash function, ensuring consistent pseudonyms across the dataset. This pseudonymization was applied to both metadata fields (e.g., `id`, `created_at`) and selected textual fields (e.g., `author`). Notably, in the `self_text` field, we pseudonymized only user mentions (e.g., `u/username`), ensuring consistency with the `author` field.

Post Removal Data Considerations

Removed posts are not included in any data slices for the post removal intervention, as they are not accessible. Instead, we rely on the timing of removal activity affecting specific subreddits, as reported by Jhaver, Rathi, and Saha (2024). In particular, they report a peak in post removals on Reddit in June 2022, referred to as the treatment period. Therefore, we collected comments from the affected subreddits three months before and after the reference date t_0 , corresponding to the one-month treatment period, in order to capture users’ reactions and the discussions surrounding the intervention.