

Learning from Easy to Complex: Adaptive Multi-Curricula Learning for Neural Dialogue Generation

Hengyi Cai,^{†,§,*} Hongshen Chen,[‡] Cheng Zhang,[†] Yonghao Song,[†]
Xiaofang Zhao,[†] Yangxi Li,[◇] Dongsheng Duan,[◇] Dawei Yin[‡]

[†]Institute of Computing Technology, Chinese Academy of Sciences

[§]University of Chinese Academy of Sciences, Beijing, China

[‡]Data Science Lab, JD.com

[◇]National Computer network Emergency Response technical Team/Coordination Center of China
{caihengyi, zhangcheng, songyonghao, zhaoxf}@ict.ac.cn, ac@chenhongshen.com,
liyangxi@outlook.com, dds@cert.org.cn, yindawei@acm.org

Abstract

Current state-of-the-art neural dialogue systems are mainly data-driven and are trained on human-generated responses. However, due to the subjectivity and open-ended nature of human conversations, the complexity of training dialogues varies greatly. The noise and uneven complexity of query-response pairs impede the learning efficiency and effects of the neural dialogue generation models. What is more, so far, there are no unified dialogue complexity measurements, and the dialogue complexity embodies multiple aspects of attributes—specificity, repetitiveness, relevance, etc. Inspired by human behaviors of learning to converse, where children learn from easy dialogues to complex ones and dynamically adjust their learning progress, in this paper, we first analyze five dialogue attributes to measure the dialogue complexity in multiple perspectives on three publicly available corpora. Then, we propose an adaptive multi-curricula learning framework to schedule a committee of the organized curricula. The framework is established upon the reinforcement learning paradigm, which automatically chooses different curricula at the evolving learning process according to the learning status of the neural dialogue generation model. Extensive experiments conducted on five state-of-the-art models demonstrate its learning efficiency and effectiveness with respect to 13 automatic evaluation metrics and human judgments.

Introduction

Teaching machines to converse with humans naturally and engagingly is a fundamentally interesting and challenging problem in AI research. Many contemporary state-of-the-art approaches (Serban et al. 2017; Li et al. 2016; Zhao, Zhao, and Eskénazi 2017; Zhou et al. 2018; Young et al. 2018; Zhang et al. 2019; Gu et al. 2019) for dialogue generation follow the data-driven paradigm: trained on a plethora of query-response pairs, the model attempts to mimic human conversations. As a data-driven approach, the quality of generated responses in neural dialogue generation heavily depends on the training data. As such, in order to train a robust and well-behaved model, most works obtain large-scale query-response pairs by crawling human-generated conversations

from publicly available sources such as OpenSubtitles (Lison and Tiedemann 2016).

Context:	This is for you. what is it? A keychain!
Response:	It's so pretty! Can I touch it?
Context:	I have many pains because of the humidity.
Response:	I also have a cough.
Context:	I understand now! My rakugo wasn't for anyone else. I've been doing it for myself.
Response:	Yurakutei kikuhiro.

Table 1: Examples of dialogues with different complexities in OpenSubtitles.

However, due to the subjectivity and open-ended nature of human conversations, the complexity of training dialogues varies greatly (Lison and Bibauw 2017). Table 1 shows samples drawn from OpenSubtitles (Lison and Tiedemann 2016), which contains millions of human-human conversations converted from movie transcripts. The response of the third sample “Yurakutei kikuhiro.” looks quite strange in terms of the given query, while the first sample is clearly easier to learn. The noise and uneven complexity of query-response pairs impede the learning efficiency and effects of the neural dialogue generation models.

Babies learn to speak by first imitating easy and exact utterances repeatedly taught by their patient parents. As children grow up, they learn grade by grade, from simple conversations to more complex ones. Inspired by such human behaviors of learning to converse, in this paper, we introduce curriculum learning to bring the neural dialogue model with easy-to-complex learning curriculum, where the model first learns from easy conversations and then gradually manages more complicated dialogues. Nevertheless, organizing a curriculum with increasing difficulty faces insurmountable obstacles: 1) automatic evaluation of dialogue complexity is a non-trivial task. Platanios et al. (2019) defined the difficulty for the training examples with respect to the sentence length and word rarity in neural machine translation. Sachan and Xing (2016) expressed the difficulty regarding the value of the objective function. So far, there is no unified approach in measuring dialogue complexity. 2) Unlike the single metric

*Work done at Data Science Lab, JD.com.

of complexity in other tasks, dialogue complexity embodies multiple aspects of attributes (See et al. 2019)—the specificity and repetitiveness of the response, the relevance between the query and the response, etc. As such, in this paper, we study the dialogue distributions along five aspects of attributes to gather multiple perspectives on dialogue complexity, resulting with five curricula accordingly.

Conventional curriculum learning organizes the training samples into one curriculum, whereas we employ multiple curricula for dialogue learning. Enlightened by the phenomenon that children usually adjust the learning focus of multiple curricula dynamically in order to acquire a good mark, we further propose an adaptive multi-curricula learning framework, established upon the reinforcement learning paradigm, to automatically choose different curricula at different learning stages according to the learning status of the neural dialogue generation model.

Detailed analysis and experiments demonstrate that the proposed framework effectively increases the learning efficiency and gains better performances on five state-of-the-art dialogue generation models regarding three publicly available conversational corpora. Code for this work is available on https://github.com/hengyicai/Adaptive_Multi-curricula_Learning_for_Dialog.

Curriculum Plausibility

Intuitively, a well-organized curriculum should provide the model learning with easy dialogues first, and then gradually increase the curriculum difficulty. However, currently, there is no unified approach for dialogue complexity evaluation, where the complexity involves multiple aspects of attributes. In this paper, we prepare the syllabus for dialogue learning with respect to five dialogue attributes. To ensure the universality and general applicability of the curriculum, we perform an in-depth investigation on three publicly available conversation corpora, PersonaChat (Zhang et al. 2018a), DailyDialog (Li et al. 2017) and OpenSubtitles (Lison and Tiedemann 2016), consisting of 140 248, 66 594 and 358 668 real-life conversation samples, respectively.

Conversational Attributes

Specificity A notorious problem for neural dialogue generation model is that the model is prone to generate generic responses. The most unspecific responses are easy to learn, but are short and meaningless, while the most specific responses, consisting of too many rare words, are too difficult to learn, especially at the initial learning stage. Following See et al. (2019), we measure the specificity of the response in terms of each word w using Normalized Inverse Document Frequency (NIDF, ranging from 0 to 1):

$$\text{NIDF}(w) = \frac{\text{IDF}(w) - \text{idf}_{\min}}{\text{idf}_{\max} - \text{idf}_{\min}}, \quad (1)$$

where $\text{IDF}(w) = \log \frac{N_r}{N_w}$. N_r is the number of responses in the training set and N_w is the number of those responses that contain w . idf_{\min} and idf_{\max} are the minimum and maximum IDF, taken over all words in the vocabulary. The specificity of a response r is measured as the mean NIDF of the words in r .

Repetitiveness Repetitive responses are easy to generate in current auto-regressive response decoding, where response generation loops frequently, whereas diverse and informative responses are much more complicated for neural dialogue generation. We measure the repetitiveness of a response r as:

$$\text{REPT}(r) = \frac{\sum_{i=1}^{|r|} I(w_i \in \{w_0, \dots, w_{i-1}\})}{|r|}, \quad (2)$$

where $I(\cdot)$ is an indicator function that takes the value 1 when $w_i \in \{w_0, \dots, w_{i-1}\}$ is true and 0 otherwise.

Query-relatedness A conversation is considered to be coherent if the response correlates well with the given query. For example, given a query “I like to paint”, the response “What kind of things do you paint?” is more relevant and easier to learn than another loosely-coupled response “Do you have any pets?”. Following previous work (Zhang et al. 2018b), we measure the query-relatedness using the cosine similarities between the query and its corresponding response in the embedding space: $\text{cos_sim}(\text{sent_emb}(c), \text{sent_emb}(r))$, where c is the query and r is the response. The sentence embedding is computed by taking the average word embedding weighted by the smooth inverse frequency $\text{sent_emb}(e) = \frac{1}{|e|} \sum_{w \in e} \frac{0.001}{0.001 + p(w)} \text{emb}(w)$ of words (Arora, Liang, and Ma 2017), where $\text{emb}(w)$ and $p(w)$ are the embedding and the probability¹ of word w respectively.

Continuity A coherent response not only responds to the given query, but also triggers the next utterance. An interactive conversation is carried out for multiple rounds and a response in the current turn also acts as the query in the next turn. As such, we introduce the continuity metric, which is similar to the query-relatedness metric, to assess the continuity of a response r with respect to the subsequent utterance u , by measuring the cosine similarities between them.

Model Confidence Despite the heuristic dialogue attributes, we further introduce the model confidence as an attribute, which distinguishes the easy-learned samples from the under-learned samples in terms of the model learning ability. A pretrained neural dialogue generation model assigns a relatively higher confidence probability for the easy-learned samples than the under-learned samples. Inspired by Kumar, Packer, and Koller; Weinshall, Cohen, and Amir (2010; 2018), we employ the negative loss value of a dialogue sample under the pretrained model as the model confidence measure, indicating whether a sampled response is easy to be generated. Here we choose the attention-based sequence-to-sequence architecture with a cross-entropy objective as the underlying dialogue model.

Dialogue Analysis

Distributions among Attributes The distributions of the data samples regarding the aforementioned five attributes are shown in Figure 1. Although the attribute score distributions on three corpora are similar, they also have disparities: 1) Outliers frequently appear among all the distributions,

¹Probability is computed based on the maximum likelihood estimation on the training data.

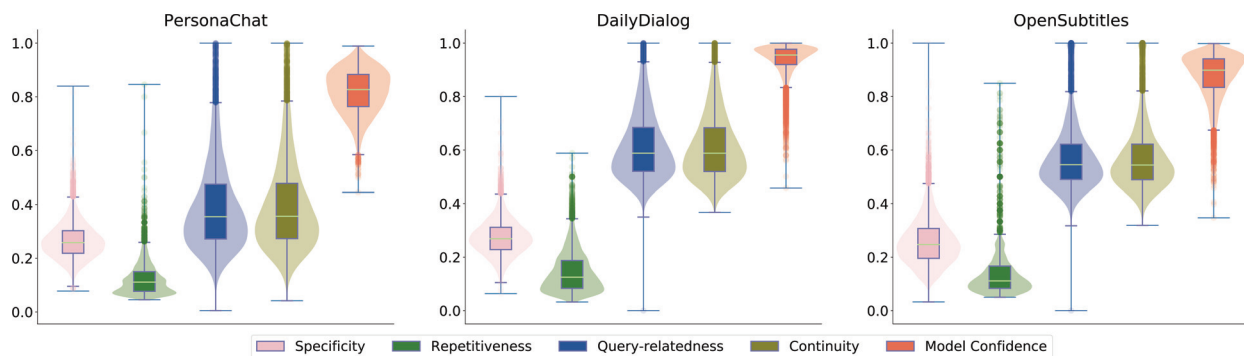


Figure 1: Violin plot with whiskers regarding five conversation attributes in PersonaChat, DailyDialog and OpenSubtitles. For ease of comparison, the model confidence score is normalized by min-max normalization with the maximum and minimum confidence score on whole corpora.

Opponent	(a)	(b)	(c)
Specificity vs. Repetitiveness	-0.141	0.065	0.038
Specificity vs. Query-rela.	0.036	0.127	-0.043
Specificity vs. Model confi.	0.007	-0.001	0.001
Specificity vs. Continuity	-0.002	0.093	-0.056
Repetitiveness vs. Query-rela.	0.002	0.093	0.011
Repetitiveness vs. Model confi.	0.005	0.002	0.001
Repetitiveness vs. Continuity	-0.001	0.059	0.010
Query-rela. vs. Model confi.	-0.003	-0.001	-0.001
Query-rela. vs. Continuity	0.054	0.150	0.102
Model confi. vs. Continuity	0.000	-0.003	0.000

Table 2: Kendall τ correlations among the proposed conversational attributes on three datasets: (a) PersonaChat (b) DailyDialog and (c) OpenSubtitles.

which exhibits the uneven dialogue complexity. 2) In terms of query-relatedness and continuity, to our surprise, the medians of the two distributions on PersonaChat are obviously smaller than the corresponding distributions on DailyDialog and OpenSubtitles. PersonaChat is manually created by crowd-sourcing, while DailyDialog and OpenSubtitles are collected from almost real-life conversations. 3) With respect to the model confidence (the negative loss value), the median of PersonaChat is relatively smaller, which illustrates that it is more difficult for the neural dialogue generation model to learn from PersonaChat.

Attributes Independence So far, we have analyzed five dialogue attributes. A question might be raised that how well the proposed attributes correlate with each other. To validate the correlations of these conversation attributes, we summarize the statistics of the Kendall τ correlations for each dataset in Table 2. We find that these attributes, in general, show little correlations with each other. This partially validates that dialogue complexity involves multiple perspectives.

Curriculum Dialogue Learning

We propose an adaptive multi-curricula learning framework to accelerate dialogue learning and improve the performance of the neural dialogue generation model.

Single Curriculum Dialogue Learning

We first illustrate how a dialogue generation model exploits the curriculum by taking single curriculum dialogue learning as an example, where the curriculum is arranged by sorting each sample in the dialogue training set \mathcal{D}_{train} according to one attribute. Then, at training time step t , a batch of training examples is sampled from the top $f(t)$ portions of the total sorted training samples, where the progressing function $f(t)$ determines the learning rate of the curriculum. Following Platanios et al. (2019), we define the progressing function $f(t)$

as $f(t) \triangleq \min(1, \sqrt{t \frac{1-c_0^2}{T} + c_0^2})$, where $c_0 > 0$ is set to 0.01 and T is the duration of curriculum learning. At the early stage of the training process, the neural dialogue generation model learns from the samples drawing from the front part of the curriculum. As the advance of the curriculum, the difficulty gradually increases, as more complex training examples appear. After training T batches, each batch of training instances is drawn from the whole training set, which is same as the conventional training procedure without a curriculum.

Adaptive Multi-curricula Learning

Dialogue complexity consists of multi-perspectives of attributes. We extend the naive single curriculum learning into the multi-curricula setting, where we provide the neural dialogue generation model with five different learning curricula, and each curriculum is prepared by ordering the training set in terms of the corresponding attribute metric accordingly. Scheduling multiple curricula in the same learning pace is obviously inappropriate. Enlightened by the phenomenon that children usually adjust the learning progress of multiple curricula dynamically in order to acquire a good mark, we further introduce an adaptive multi-curricula learning framework, to automatically choose different curricula at different learning stages according to the learning status of the neural dialogue generation model.

The adaptive multi-curricula learning framework is established upon the reinforcement learning (RL) paradigm. Figure 2 illustrates the overall learning process. The multi-curricula learning scheme is scheduled according to the model’s performance on the validation set, where the schedul-

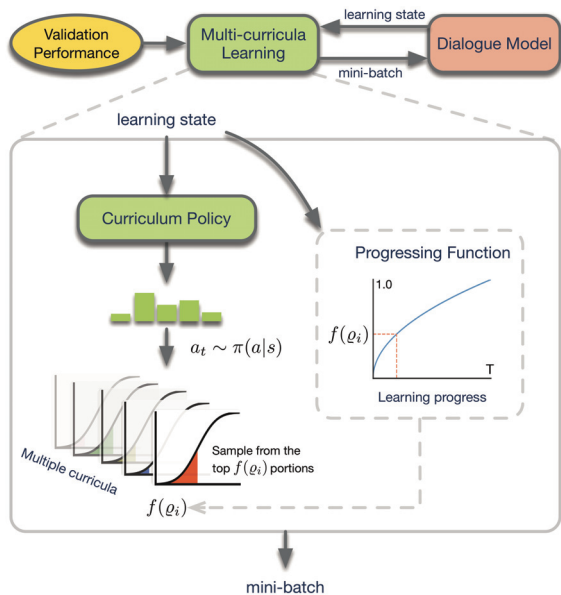


Figure 2: Overview of the proposed adaptive multi-curricula learning framework for neural dialogue generation. At training step t , the curriculum policy chooses one of the curricula to learn and the progressing function defines the learning progress on the selected curriculum.

ing mechanism acts as the policy π interacting with the dialogue model to acquire the learning status s . The reward of the multi-curricula learning mechanism m_t indicates how well the current dialogue model performs. A positive reward is expected if a multi-curricula scheduling action a_t brings improvements on the model’s performance, and the current mini-batch of training samples is drawn consulting with the scheduling action a_t . The neural dialogue generation model learns from those mini-batches, resulting with a new learning status s_{t+1} . The adaptive multi-curricula learning framework is optimized to maximize the reward. Such learning process loops continuously until the performance of the neural dialogue generation model converges.

More specifically, the learning status of the dialogue model is represented as the state. Similar to other curriculum learning framework (Bengio et al. 2009; Tsvetkov et al. 2016), the learning status consists of several features, including the passed mini-batch number, the average historical training loss, the loss value on the training data, the margin value of predicted probabilities and the last validation metric values. To enable the proposed framework to be aware of the learning progress ϱ_i regarding each attribute i , we also exploit $\varrho = \{\varrho_0, \varrho_1, \dots, \varrho_{k-1}\}$ for state representations, where k stands for the number of curricula, here $k = 5$, and ϱ_i can be simply measured as the learning steps on the attribute i . The multi-curricula learning framework samples a scheduling action a_t per step by its policy $\Phi_\theta(a|s)$ with parameters θ to be learnt, and the scheduling action $a_t \in \{0, 1, \dots, k-1\}$ chooses one of the curricula. Then, a mini-batch of dialogue instances is sampled from the top $f(\varrho_i)$ portions of the cho-

sen curriculum. The dialogue model is validated every Γ training steps and the curriculum policy is updated at Γ -round intervals according to a reward m_Γ . To accelerate the neural dialogue learning, m_Γ is defined as the ratio of two consecutive performance deviations on a held-out validation set: $m_\Gamma = \frac{\delta_\Gamma}{\delta_{\Gamma}^{\text{prev}}} - 1$. The performance deviation δ_Γ is calculated in terms of 13 automatic evaluation metrics $\{\xi_1, \xi_2, \dots, \xi_{13}\}$ used in the experiments:

$$\delta_\Gamma = \sum_{i=1}^{13} (\xi_i^\Gamma - \xi_i^{\Gamma_{\text{prev}}}), \quad (3)$$

where ξ_i^Γ is the evaluation score of metric i computed at the current validation turn and $\xi_i^{\Gamma_{\text{prev}}}$ is computed at the previous validation turn. Each score is normalized into $[0, 1]$.

The curriculum policy is trained by maximizing the expected reward: $J(\theta) = \mathbb{E}_{\Phi_\theta(a|s)}[M(s, a)]$, where $M(s, a)$ is the state-action value function. Since $M(s, a)$ is non-differentiable w.r.t. θ , in this work, we use REINFORCE (Williams 1992), a likelihood ratio policy gradient algorithm to optimize $J(\theta)$ based on the gradient:

$$\begin{aligned} \nabla_\theta J &= \sum_{t=1}^{\Gamma} \mathbb{E}_{\Phi_\theta(a|s)}[\nabla_\theta \log \Phi_\theta(a_t|s_t) M(s_t, a_t)] \\ &\approx \sum_{t=1}^{\Gamma} \nabla_\theta \log \Phi_\theta(a_t|s_t) v_t \end{aligned} \quad (4)$$

where v_t is the sampled estimation of reward $M(s_t, a_t)$ from one episode execution of the policy $\Phi_\theta(a|s)$. In our implementation, v_t is computed as the terminal reward m_Γ .

Experiments

Experiment Settings

We perform experiments using the following state-of-the-art models: (i) SEQ2SEQ: a sequence-to-sequence model with attention mechanisms (Bahdanau, Cho, and Bengio 2015), (ii) CVAE: a conditional variational auto-encoder model with KL-annealing and a BOW loss (Zhao, Zhao, and Eskénazi 2017), (iii) Transformer: an encoder-decoder architecture relying solely on attention mechanisms (Vaswani et al. 2017), (iv) HRED: a generalized sequence-to-sequence model with the hierarchical RNN encoder (Serban et al. 2016), (v) DialogWAE: a conditional Wasserstein auto-encoder, which models the distribution of data by training a GAN within the latent variable space (Gu et al. 2019). We adopt several standard metrics widely used in existing works to measure the performance of dialogue generation models, including BLEU (Papineni et al. 2002), embedding-based metrics (Average, Extrema, Greedy and Coherence) (Liu et al. 2016; Xu et al. 2018), entropy-based metrics (Ent- $\{1,2\}$) (Serban et al. 2017) and distinct metrics (Dist- $\{1,2,3\}$ and Intra- $\{1,2,3\}$) (Li et al. 2016; Gu et al. 2019).

Implementation and Reproducibility

Regarding model implementations, we employ a 2-layer bidirectional LSTM as the encoder and a unidirectional one as

	Models	BLEU	Dist-1	Dist-2	Dist-3	Intra-1	Intra-2	Intra-3	Avg	Ext	Gre	Coh	Ent-1	Ent-2
(a)	SEQ2SEQ	0.316	0.3967	2.190	5.026	77.24	87.00	90.73	58.85	47.22	65.91	62.87	6.674	10.368
	SEQ2SEQ (▲)	0.352	0.5406	3.537	8.343	82.74	92.28	95.47	62.20	47.57	67.07	66.87	6.875	10.723
	CVAE	0.290	0.5330	3.228	7.715	85.30	94.69	96.73	61.99	47.12	66.68	65.27	6.900	10.738
	CVAE (▲)	0.321	0.6530	4.572	11.326	89.39	96.90	98.28	63.08	47.37	67.09	66.81	6.973	10.866
	Transformer	0.195	0.7667	3.264	6.262	83.11	93.82	96.48	59.53	44.99	65.57	62.48	7.169	11.232
	Transformer (▲)	0.329	0.8468	4.291	8.829	89.39	97.92	99.29	62.33	46.24	66.54	65.35	7.183	11.331
	HRED	0.272	0.8109	4.217	8.948	84.25	95.20	97.19	60.63	45.91	66.33	63.53	7.082	11.149
	HRED (▲)	0.308	0.8926	5.332	12.281	91.45	97.89	98.93	62.25	46.53	66.53	65.22	7.156	11.274
	DialogWAE	0.124	0.9594	5.153	11.483	94.35	98.04	98.54	58.98	43.53	63.66	60.93	7.424	11.696
DialogWAE (▲)	0.171	1.1388	6.890	15.842	96.65	99.41	99.68	63.81	45.90	65.63	65.63	7.462	11.845	
(b)	SEQ2SEQ	0.399	1.542	9.701	22.005	91.10	96.97	98.15	67.50	47.41	68.45	68.39	6.933	10.921
	SEQ2SEQ (▲)	0.617	1.846	11.665	25.918	93.28	98.16	99.00	67.75	47.57	68.91	68.94	7.041	11.164
	CVAE	0.406	1.615	11.187	26.588	90.56	97.48	98.70	67.76	46.82	68.90	67.77	7.124	11.308
	CVAE (▲)	0.691	1.890	13.125	30.793	94.48	98.88	99.47	67.81	47.36	69.00	68.00	7.139	11.453
	Transformer	0.412	2.617	13.212	25.175	90.50	96.53	97.92	65.82	46.01	67.86	66.03	7.192	11.309
	Transformer (▲)	0.8063	2.917	15.509	30.954	94.38	98.59	99.26	66.52	46.79	68.40	66.65	7.307	11.651
	HRED	0.1746	2.323	11.563	22.471	94.01	98.45	99.30	65.09	45.91	67.49	65.09	7.141	11.331
	HRED (▲)	0.3834	2.448	12.880	26.355	94.18	98.65	99.36	65.37	46.43	68.14	65.22	7.058	11.341
	DialogWAE	0.0303	2.244	12.340	26.109	92.98	98.02	98.78	64.19	42.03	65.52	64.31	7.420	11.954
DialogWAE (▲)	0.0814	2.654	16.311	36.591	92.79	98.73	99.53	65.27	43.41	66.60	65.62	7.539	12.106	
(c)	SEQ2SEQ	0.140	0.3053	2.472	6.377	95.94	97.37	98.34	54.71	49.03	62.87	59.09	6.226	9.516
	SEQ2SEQ (▲)	0.172	0.4870	4.514	12.319	96.67	98.16	98.76	55.87	49.13	63.78	62.65	6.353	10.236
	CVAE	0.0522	0.3028	2.614	7.574	95.12	97.32	98.19	56.17	47.70	63.10	58.85	6.156	9.460
	CVAE (▲)	0.0429	0.4061	3.928	12.676	96.11	98.09	98.99	57.06	47.85	63.44	60.82	6.463	10.442
	Transformer	0.072	0.3883	1.737	3.503	95.38	97.13	98.18	55.10	48.16	62.69	57.45	6.661	10.362
	Transformer (▲)	0.050	0.5655	3.079	7.005	97.15	98.39	99.11	55.63	48.17	63.16	59.19	6.666	10.715
	HRED	0.0498	0.3311	1.900	4.465	95.34	97.38	98.15	55.41	48.34	62.79	58.92	6.346	9.715
	HRED (▲)	0.0795	0.6982	4.224	9.933	97.43	98.68	99.20	55.89	48.64	63.53	59.55	6.510	10.409
	DialogWAE	0.0038	0.4808	3.870	11.856	86.91	93.88	97.93	51.59	43.40	56.23	51.96	5.633	8.559
DialogWAE (▲)	0.0352	0.7360	6.549	18.881	94.92	97.10	98.14	54.73	47.84	63.52	58.81	6.7859	11.187	

Table 3: Automatic evaluation results (%) on the test set of three datasets: (a) PersonaChat, (b) DailyDialog and (c) OpenSubtitles. “▲” denotes that the model is trained using our proposed framework. The metrics Average, Extrema, Greedy and Coherence are abbreviated as Avg, Ext, Gre and Coh, respectively. The best results in each group are highlighted with **bold**.

the decoder for the SEQ2SEQ and CVAE. The hidden size is set to 512, and the latent size is set to 64 for CVAE. For the Transformer, the hidden size, attention heads and number of hidden layers are set to 512, 8 and 6, respectively. In terms of HRED and DialogWAE, the utterance encoder is a bidirectional GRU with 512 hidden units in each direction. The context encoder and decoder are both GRUs with 512 hidden units. Regarding the curriculum length T , we set its value in the following manner: we train the baseline model using the vanilla training procedure and compute the number of training steps it takes to reach approximately 110% of its final loss value. We then set T to this value. Each model is trained using two protocols: the vanilla training procedure without using any curriculum and our proposed adaptive multi-curricula learning procedure, keeping other configurations the same.

Overall Performance and Human Evaluation

The automatic evaluation results of our proposed multi-curricula learning framework and the comparison models are listed in Table 3. Compared with the vanilla training procedure, our curriculum learning framework 1) brings solid improvements for all the five dialogue models regarding almost all the evaluation metrics, 2) achieves competitive performance across three datasets, affirming the superiority and general applicability of our proposed framework. We also notice that the relative improvements of Distinct on OpenSubtitles are much larger (up to 122.46%) than the other

two experiment datasets. We conjecture that the OpenSubtitles, with extremely uneven-complexity dialogue samples, benefits more from the multi-curricula learning paradigm.

We conduct a human evaluation to validate the effectiveness of the proposed multi-curricula learning framework. We employ the DailyDialog as the evaluation corpus since it is closer to our daily conversations and easier for humans to make the judgment. We randomly sampled 100 cases from the test set and compared the generated responses of the models trained with the vanilla learning procedure and the multi-curricula learning framework. Three annotators, who have no knowledge about which system the response is from, are then required to evaluate among win (response₁ is better), loss (response₂ is better) and tie (they are equally good or bad) independently, considering four aspects: coherence, logical consistency, fluency and diversity. Cases with different rating results are counted as “tie”. Table 4 reveals the results of the subjective evaluation. We observe that our multi-curricula learning framework outperforms the vanilla training method on all the five dialogue models and the kappa scores indicate that the annotators came to a fair agreement in the judgment. We checked the cases on which the vanilla training method loses to our multi-curricula learning method and found that the vanilla training method usually leads to irrelevant, generic and repetitive responses, while our method effectively alleviates such defects.

Our method vs. Vanilla training	Win	Loss	Tie	Kappa
SEQ2SEQ	52%	7%	41%	0.5137
CVAE	42%	5%	53%	0.4633
Transformer	41%	14%	45%	0.4469
HRED	46%	12%	42%	0.5940
DialogWAE	42%	9%	49%	0.5852

Table 4: The results of human evaluation on DailyDialog.

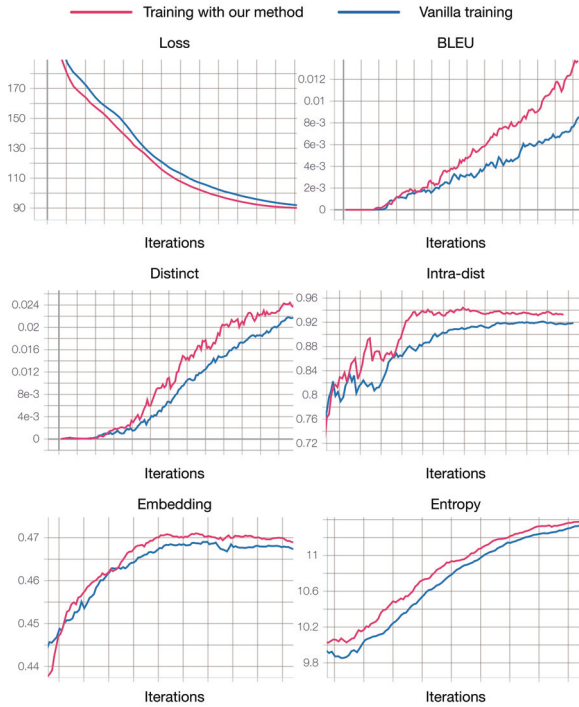


Figure 3: Comparison of the vanilla training and adaptive multi-curricula learning for six evaluation metrics with SEQ2SEQ on the validation set of DailyDialog. Dist-1, Intra-1, Embedding Extrema and Ent-2 are denoted as “Distinct”, “Intra-dist”, “Embedding” and “Entropy”, respectively.

Model Analysis

Single vs Multi-curricula To further glean the insights regarding the effects of the five conversational attributes on the proposed learning framework, we conduct the ablation test using the SEQ2SEQ model by only exploiting a single attribute during the curriculum learning. Table 5 reports the ablation test results on the DailyDialog. We observe that the curriculum learning leads to consistent performance improvements, even with one single conversational attribute. When applying the multi-curricula learning method to the model, we observe the nearly best performance.

Effects of Adaptive Multi-curricula Learning Adaptive multi-curricula learning enables the model to choose different curricula at different learning stages according to the learning status of the underlying model. As shown in Table 6, we notice the performance drops when replacing the RL-based curriculum policy with the random policy, indicating that

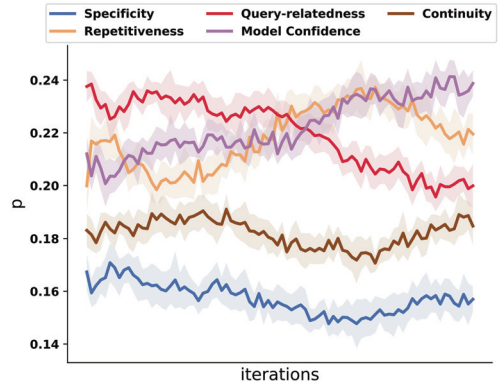


Figure 4: Trajectory of the curriculum learning action distribution $\pi(a_t|s_t)$ during the learning process. The bold line shows the mean and the shaded region shows the standard deviation.

choosing different curricula according to the learning status of the model benefits the model training. When training the model with anti-curriculum learning, i.e., feeding examples to the model in the complex-to-easy manner, we also observe consistent performance decreases, affirming the effectiveness of the easy-to-complex learning manner.

Learning Efficiency Figure 3 shows comparative results when training the SEQ2SEQ model on DailyDialog with different training protocols. As shown in Figure 3, our training method accelerates the learning effectively and consistently outperforms the baseline by a large margin in most cases.

Multi-curricula Learning Route To glean insights on how the proposed adaptive multi-curricula learning framework performs, we present the choosing curriculum distributions $\pi(a_t|s_t)$ during the model learning in Figure 4. We notice that the model focuses more on the curriculum of “query-relatedness” at the initial learning stage. As the learning proceeds, the model gradually turns its attention to other curricula. At the final stage, the model pays more attention to the “model confidence” curriculum. Such dynamic learning route is quite similar to the human learning behavior.

Examples with Different Learning Frequencies As shown in Table 7, the most frequently learnt examples are comprehensively far better than those seldom learnt examples, which exhibits the effectiveness of the adaptive multi-curricula learning framework.

Related Work

Neural dialogue generation. Neural generation models for dialogue, despite their ubiquity in current research, are still far from the real-world applications. Previous approaches enhancing neural dialogue generation models mainly focus on the learning systems by incorporating extra information to the dialogue models such as relevant dialogue history (Zhang et al. 2019), topics (Xing et al. 2017), emotions (Zhou et al. 2018), out-sourcing knowledge (Young

Curriculum by	BLEU	Dist-1	Dist-2	Dist-3	Intra-1	Intra-2	Intra-3	Avg	Ext	Gre	Coh	Ent-1	Ent-2
None	0.3599	1.5777	10.103	23.149	90.99	96.40	97.63	67.49	47.15	68.47	68.44	7.065	11.077
Specificity	0.6866	1.6957	11.828	28.883	91.63	97.77	98.83	67.64	47.02	68.77	68.25	7.091	11.281
Repetitiveness	0.5994	1.6581	10.590	23.209	91.63	97.20	98.25	67.72	47.45	68.53	67.70	7.038	11.085
Query-relatedness	0.5745	1.7125	11.461	26.625	90.27	96.64	97.99	67.79	46.90	68.56	69.33	7.070	11.121
Continuity	0.5662	1.7496	11.370	25.710	91.83	97.56	98.58	67.55	47.37	68.66	67.89	7.036	11.105
Model confidence	0.5917	1.7264	11.365	26.145	91.47	97.31	98.40	67.44	46.85	68.57	68.17	7.092	11.172
Multi-curricula	0.7057	1.9612	12.705	28.759	92.93	98.13	98.89	67.82	47.46	68.81	69.35	7.101	11.289

Table 5: Ablation test (%) for the proposed five curriculum learning attributes on the validation set of the DailyDialog dataset with the SEQ2SEQ model.

	BLEU	Dist-1	Dist-2	Dist-3	Intra-1	Intra-2	Intra-3	Avg	Ext	Gre	Coh	Ent-1	Ent-2
Full method	0.617	1.846	11.665	25.918	93.28	98.16	99.00	67.75	47.57	68.91	68.94	7.041	11.164
(a) <i>with random policy</i>	0.565	1.696	10.563	23.383	92.57	97.22	98.85	65.64	46.96	67.96	66.64	6.939	10.953
(b) <i>with anti-curriculum</i>	0.354	1.491	9.6950	21.978	90.48	96.69	97.72	67.09	46.87	68.19	66.85	6.973	11.025

Table 6: Ablation test (%) of the curriculum learning framework on the DailyDialog dataset with SEQ2SEQ.

Examples with top learning frequencies	
Context:	Have you ever been to America?
Response:	No, but I'd really like to.
Context:	Can i ask you a question?
Response:	Sure, what do you want to know?
Context:	A new film is on. Have you ever seen it?
Response:	What kind of movie is it?
Examples with tail learning frequencies	
Context:	Ma'am?
Response:	May I have a magazine or something?
Context:	What took you so long?
Response:	Gross. Diarrhea?
Context:	I need more water!
Response:	oooo... gross... You're sweating all over the place.

Table 7: Examples with top and tail learning frequencies of the SEQ2SEQ model on DailyDialog, using the proposed learning framework.

et al. 2018) or exemplars (Pandey et al. 2018). Latent variables (Serban et al. 2017; Zhao, Zhao, and Eskénazi 2017) also benefit the model with more diverse response generations. In contrast with the previous researches, which pay most attention to the underlying dialogue models, in this work, we concentrate on the dialogue learning process and investigate how the performance of existing dialogue models can be improved on the conversation corpora with varying levels of complexity, by simply adapting the training protocols. Csaky, Purgai, and Recski (2019) attributed the generic/uninteresting responses to the high-entropy utterances in the training set and proposed to improve dataset quality through data filtering. Though straightforward, the filtering threshold need be carefully chosen to prevent the data size decreasing too much. Lison and Bibauw; Shang et al. (2017; 2018) proposed to investigate instance weighting into dialogue systems. However, it is difficult to accurately define the “weight” of an example in conversation systems, since the dialogue data is of high diversity and complexity. Our proposed adaptive multi-curricula learning framework, con-

centrating on different curricula at evolving learning process according to the learning status of the underlying model, enables dialogue systems gradually proceed from easy to more complex samples in training and thus efficiently improves the response quality.

Curriculum learning in NLP. Bengio et al. (2009) examined curriculum learning and demonstrated empirically that such curriculum approaches indeed help decrease training times and sometimes even improve generalization. Jiang et al. (2015) managed curriculum learning as an optimization problem. Curriculum learning has also been applied to many NLP tasks. To name a few, Sachan and Xing (2016) applied self-paced learning for neural question answering. Liu et al. (2018) proposed a curriculum learning based natural answer generation framework, dealing with low-quality QA-pairs first and then gradually learn more complete answers. Tay et al. (2019) proposed curriculum pointer-generator networks for reading comprehension over long narratives. Platanios et al. (2019) applied curriculum learning for neural machine translation (NMT), aiming to reduce the need for specialized training heuristics and boost the performance of existing NMT systems. In our work, instead of organizing the curriculum only from a single aspect, we provide an adaptive multi-curricula dialogue learning framework, grounding our analysis on five conversation attributes regarding the dialogue complexity.

Conclusion

In this paper, we propose an adaptive multi-curricula dialogue learning framework, to enable the dialogue models to gradually proceed from easy samples to more complex ones in training. We first define and analyze five conversational attributes regarding the complexity and easiness of dialogue samples, and then present an adaptive multi-curricula learning framework, which chooses different curricula at different training stages according to the learning status of the model. Extensive experiments conducted on three large-scale datasets and five state-of-the-art conversation models show that our proposed learning framework is able to boost the

performance of existing dialogue systems.

Acknowledgments

This work is supported by the National Natural Science Foundation of China-Joint Fund for Basic Research of General Technology under Grant U1836111 and U1736106. Hongshen Chen and Yonghao Song are the corresponding authors.

References

- Arora, S.; Liang, Y.; and Ma, T. 2017. A simple but tough-to-beat baseline for sentence embeddings. In *ICLR*.
- Bahdanau, D.; Cho, K.; and Bengio, Y. 2015. Neural machine translation by jointly learning to align and translate. In *ICLR*.
- Bengio, Y.; Louradour, J.; Collobert, R.; and Weston, J. 2009. Curriculum learning. In *ICML*.
- Csaky, R.; Purgai, P.; and Recski, G. 2019. Improving neural conversational models with entropy-based data filtering. In *ACL*.
- Gu, X.; Cho, K.; Ha, J.; and Kim, S. 2019. Dialogwae: Multimodal response generation with conditional wasserstein auto-encoder. In *ICLR*.
- Jiang, L.; Meng, D.; Zhao, Q.; Shan, S.; and Hauptmann, A. G. 2015. Self-paced curriculum learning. In *AAAI*.
- Kumar, M. P.; Packer, B.; and Koller, D. 2010. Self-paced learning for latent variable models. In *NIPS*.
- Li, J.; Galley, M.; Brockett, C.; Gao, J.; and Dolan, B. 2016. A diversity-promoting objective function for neural conversation models. In *NAACL-HLT*.
- Li, Y.; Su, H.; Shen, X.; Li, W.; Cao, Z.; and Niu, S. 2017. Dailydialog: A manually labelled multi-turn dialogue dataset. In *IJCNLP*.
- Lison, P., and Bibauw, S. 2017. Not all dialogues are created equal: Instance weighting for neural conversational models. In *SIGDIAL*.
- Lison, P., and Tiedemann, J. 2016. Opensubtitles2016: Extracting large parallel corpora from movie and TV subtitles. In *LREC*.
- Liu, C.; Lowe, R.; Serban, I.; Noseworthy, M.; Charlin, L.; and Pineau, J. 2016. How NOT to evaluate your dialogue system: An empirical study of unsupervised evaluation metrics for dialogue response generation. In *EMNLP*.
- Liu, C.; He, S.; Liu, K.; and Zhao, J. 2018. Curriculum learning for natural answer generation. In *IJCAI*.
- Pandey, G.; Contractor, D.; Kumar, V.; and Joshi, S. 2018. Exemplar encoder-decoder for neural conversation generation. In *ACL*.
- Papineni, K.; Roukos, S.; Ward, T.; and Zhu, W. 2002. Bleu: a method for automatic evaluation of machine translation. In *ACL*.
- Platanios, E. A.; Stretcu, O.; Neubig, G.; Póczos, B.; and Mitchell, T. M. 2019. Competence-based curriculum learning for neural machine translation. In *NAACL-HLT*.
- Sachan, M., and Xing, E. P. 2016. Easy questions first? A case study on curriculum learning for question answering. In *ACL*.
- See, A.; Roller, S.; Kiela, D.; and Weston, J. 2019. What makes a good conversation? how controllable attributes affect human judgments. In *NAACL-HLT*.
- Serban, I. V.; Sordoni, A.; Bengio, Y.; Courville, A. C.; and Pineau, J. 2016. Building end-to-end dialogue systems using generative hierarchical neural network models. In *AAAI*.
- Serban, I. V.; Sordoni, A.; Lowe, R.; Charlin, L.; Pineau, J.; Courville, A. C.; and Bengio, Y. 2017. A hierarchical latent variable encoder-decoder model for generating dialogues. In *AAAI*.
- Shang, M.; Fu, Z.; Peng, N.; Feng, Y.; Zhao, D.; and Yan, R. 2018. Learning to converse with noisy data: Generation with calibration. In *IJCAI*.
- Tay, Y.; Wang, S.; Tuan, L. A.; Fu, J.; Phan, M. C.; Yuan, X.; Rao, J.; Hui, S. C.; and Zhang, A. 2019. Simple and effective curriculum pointer-generator networks for reading comprehension over long narratives. In *ACL*.
- Tsvetkov, Y.; Faruqui, M.; Ling, W.; MacWhinney, B.; and Dyer, C. 2016. Learning the curriculum with bayesian optimization for task-specific word representation learning. In *ACL*.
- Vaswani, A.; Shazeer, N.; Parmar, N.; Uszkoreit, J.; Jones, L.; Gomez, A. N.; Kaiser, L.; and Polosukhin, I. 2017. Attention is all you need. In *NIPS*.
- Weinshall, D.; Cohen, G.; and Amir, D. 2018. Curriculum learning by transfer learning: Theory and experiments with deep networks. In *ICML*.
- Williams, R. J. 1992. Simple statistical gradient-following algorithms for connectionist reinforcement learning. *Machine Learning* 8:229–256.
- Xing, C.; Wu, W.; Wu, Y.; Liu, J.; Huang, Y.; Zhou, M.; and Ma, W. 2017. Topic aware neural response generation. In *AAAI*.
- Xu, X.; Dusek, O.; Konstas, I.; and Rieser, V. 2018. Better conversations by modeling, filtering, and optimizing for coherence and diversity. In *EMNLP*.
- Young, T.; Cambria, E.; Chaturvedi, I.; Zhou, H.; Biswas, S.; and Huang, M. 2018. Augmenting end-to-end dialogue systems with commonsense knowledge. In *AAAI*.
- Zhang, S.; Dinan, E.; Urbanek, J.; Szlam, A.; Kiela, D.; and Weston, J. 2018a. Personalizing dialogue agents: I have a dog, do you have pets too? In *ACL*.
- Zhang, Y.; Galley, M.; Gao, J.; Gan, Z.; Li, X.; Brockett, C.; and Dolan, B. 2018b. Generating informative and diverse conversational responses via adversarial information maximization. In *NeurIPS*.
- Zhang, H.; Lan, Y.; Pang, L.; Guo, J.; and Cheng, X. 2019. Recosa: Detecting the relevant contexts with self-attention for multi-turn dialogue generation. In *ACL*.
- Zhao, T.; Zhao, R.; and Eskénazi, M. 2017. Learning discourse-level diversity for neural dialog models using conditional variational autoencoders. In *ACL*.
- Zhou, H.; Huang, M.; Zhang, T.; Zhu, X.; and Liu, B. 2018. Emotional chatting machine: Emotional conversation generation with internal and external memory. In *AAAI*.