

Evaluating Explainable AI on a Multi-Modal Medical Imaging Task: Can Existing Algorithms Fulfill Clinical Requirements?

Weina Jin,¹ Xiaoxiao Li,² Ghassan Hamarneh¹

¹ School of Computing Science, Simon Fraser University

² Department of Electrical and Computer Engineering, The University of British Columbia

weinaj@sfu.ca, xiaoxiao.li@ece.ubc.ca, hamarneh@sfu.ca

Abstract

Being able to explain the prediction to clinical end-users is a necessity to leverage the power of artificial intelligence (AI) models for clinical decision support. For medical images, a feature attribution map, or heatmap, is the most common form of explanation that highlights important features for AI models' prediction. However, it is unknown how well heatmaps perform on explaining decisions on multi-modal medical images, where each image modality or channel visualizes distinct clinical information of the same underlying biomedical phenomenon. Understanding such modality-dependent features is essential for clinical users' interpretation of AI decisions. To tackle this clinically important but technically ignored problem, we propose the modality-specific feature importance (MSFI) metric. It encodes clinical image and explanation interpretation patterns of modality prioritization and modality-specific feature localization. We conduct a clinical requirement-grounded, systematic evaluation using computational methods and a clinician user study. Results show that the examined 16 heatmap algorithms failed to fulfill clinical requirements to correctly indicate AI model decision process or decision quality. The evaluation and MSFI metric can guide the design and selection of explainable AI algorithms to meet clinical requirements on multi-modal explanation.

1 Introduction

Being able to explain decisions to users is a sought-after quality of artificial intelligence (AI) or deep learning (DL) based predictive models, particularly when deploying them in high-stakes real-world applications, such as clinical decision support systems (Jin et al. 2020; He et al. 2019). Explanations can help clinical end-users verify models' decision (Ribeiro, Singh, and Guestrin 2016), resolve disagreements with AI during decision discrepancy (Cai et al. 2019), calibrate their trust in AI assistance (Bussone, Stumpf, and O'Sullivan 2015), and ultimately facilitate doctor-AI communication and collaboration to leverage the strengths of both (Topol 2019).

To understand AI decision on medical imaging tasks, the most common and clinical end-user-friendly explanation is a heatmap or feature attribution map (Reyes et al. 2020). It highlights the important regions on the input image for the

model's prediction. Despite many explanation algorithms have been proposed in the explainable AI (XAI) and computer vision communities (Simonyan, Vedaldi, and Zisserman 2014; Lundberg and Lee 2017; Selvaraju et al. 2017; Ribeiro, Singh, and Guestrin 2016), there is a lack of systematic evaluation on their correctness and usefulness in medical imaging tasks. It is an open question to evaluate if the existing XAI algorithms can fulfill clinical requirements, given these methods were originally proposed on natural images.

However, XAI evaluation is notoriously challenging and still immature, due to complex human factors and application scenarios. Most of the existing evaluation desiderata and metrics are chosen or proposed by AI practitioners, with little involvement of model end-users in this process (Jin et al. 2021). Such an engineer-centered evaluation paradigm may be problematic in domains that require experts' knowledge to define the problem, such as medicine. To tackle this issue, we conduct a clinical requirement-grounded, systematic evaluation on a real and common clinical task with multi-modal medical images. With close collaboration with physicians, we first formulate the *clinically-important-but-technically-ignored problem* of explaining on multi-modal medical images, then define evaluation desiderata and metrics based on *clinical requirements*.

To address the XAI evaluation problem in medical imaging tasks, this work focuses on its general form of *multi-modal medical images*, which are widely used in clinical settings for critical decision-support, such as multi-pulse sequence magnetic resonance imaging (MRI), PET-CT, and multi-stained pathological images. Interpreting information from multi-modal data is a complex process in clinical practice. Doctors usually compare and combine modality-specific information to reason about diagnosis and differential diagnosis. For instance, in a radiology report on MRI, radiologists usually observe and describe *anatomical* structures in T1 modality, and *pathological* changes in T2 modality (Cochard and Netter 2012; Bitar et al. 2006); doctors can infer the composition of a lesion (such as fat, hemorrhage, protein, fluid) by combining its signals from different MRI modalities (Patel et al. 2016). In addition, some imaging modalities are particularly crucial for the diagnosis and management of certain diseases (Lansberg et al. 2000).

Existing XAI methods (Simonyan, Vedaldi, and Zisserman 2014; Lundberg and Lee 2017; Selvaraju et al. 2017;

Ribeiro, Singh, and Guestrin 2016) are typically not designed for clinical purposes. For example, the current XAI in medical imaging analysis (MIA) mainly focuses on explaining models on single image modality, which conforms with natural image explanation settings, but over-simplifies or ignores the above complex clinical decision process with medical images. Further, those XAI methods may not consider end-users' image and explanation interpretation patterns by design. Two clinical patterns on multi-modal explanation were extracted based on our user study with physicians (§4): the heatmap needs to **1)** highlight important modalities and to **2)** localize important features for model prediction.

In this work, we formulate a novel problem of multi-modal explanation to the technical community, and present a systematic evaluation on this problem. The evaluation inspects two main clinical requirements of explanation: how *faithful* the explanation describes the AI model's internal decision process, and how the human assessment of explanation *plausibility* is indicative for model's decision quality. We propose a computational metric *modality-specific feature importance* (MSFI) that summarizes the above clinical patterns on multi-modal explanation. We then conduct a systematic evaluation on 16 XAI methods that cover the most common activation-, gradient-, and perturbation-based approaches in a brain tumor classification task using multi-modal MRI. Our key contributions are:

1. We conduct a systematic evaluation on a medical imaging task, that covers both quantitative and qualitative physician evaluation, and clinical requirements grounded computational evaluation on explanation *faithfulness* and *plausibility*. Results show that existing methods are not proposed to fulfill the clinical requirements of modality-specific medical imaging explanation.
2. We formulate and tackle the novel and clinically significant problem of multi-modal image explanation, which is the generalized form of single-modal image explanation.
3. We propose the computational evaluation metric MSFI, which automates the human assessment process by incorporating the clinical patterns of modality prioritization and feature localization.

2 Related Work

2.1 Clinical Requirement-Grounded XAI Evaluation Desiderata and Metrics

Existing surveys (Sokol and Flach 2020; Mohseni, Zarei, and Ragan 2021; Vilone and Longo 2021; Došilović, Brčić, and Hlupić 2018) outline many desiderata as proxies for real-world outcomes to guide the design and evaluation of XAI algorithms, such as correctness, robustness (Alvarez-Melis and Jaakkola 2018), simulatability (Hase and Bansal 2020). We develop the critical task-specific evaluation desiderata, which are grounded in the literature on explanation correctness (Jacovi and Goldberg 2020), and in the understandings of the clinical utility of explanation via prior (Jin et al. 2021) and our clinical user study: the primary objectives of explanation in critical tasks are to enable users to **1)** understand why, how, and when AI works and

does not work. As a prerequisite for users to build a precise mental model of AI, the explanation should *faithfully* reflect the model decision process. **2)** Explanation enables users to verify AI decisions and identify potential errors via human judgment on how *plausible* the explanation is. We summarize computational metrics in prior work related to the two clinical requirements of explanation:

Faithfulness measures how accurately the explanation reflects the model's true decision process. It cannot be measured by human judgment or annotated ground truth encoding human prior knowledge, as humans have no idea about a model's internal decision process. Common evaluation methods include gradually erasing or adding features to input and measuring its effect on model performance (Yin et al. 2021; Yeh et al. 2019; Hooker et al. 2019; Samek et al. 2017; Lundberg et al. 2020), and constructing synthetic datasets with known ground truth features (Kim et al. 2018).

Plausibility is the users' assessment of how agreeable the explanation is with their prior knowledge of the task. It requires human annotated ground truth to reflect human prior knowledge on a given task, such as feature segmentation masks or bounding boxes. Agreement metrics comparing a heatmap with the ground truth mask, such as intersection over union (IoU), are widely used (Taghanaki et al. 2019; Bau et al. 2017).

2.2 XAI Evaluation in Medical Image Analysis

Although many XAI algorithms have been proposed for or applied in various MIA tasks (Singh, Sengupta, and Lakshminarayanan 2020), extensive evaluations on their correctness and clinical utility are under-explored. In our ongoing review, among 102 works (in Supplemental Material) that apply or propose XAI algorithms for medical imaging tasks, 35% evaluated the explanation with computational metrics only; 8% evaluated via physician user study to verify explanation *plausibility* either quantitatively or qualitatively. Only 5% have both computational and physician evaluation.

There are very limited emerging works in which XAI evaluation is the main focus. Recently, Singh et al. (2020) evaluated 13 XAI algorithms on classifying eye diseases using retina images and asked 14 clinicians to rate the heatmaps regarding their clinical relevance (*plausibility*). Concurrent with our work, de Souza et al. (2021) evaluated five gradient-based XAI algorithms in classifying early cancer from endoscopic images. They used computational metrics to measure the agreement between heatmaps and the ground-truth annotations of localized lesion (*plausibility*). Gradient method outperformed the rest four algorithms that best matches with doctors' ground-truth annotations.

The above-mentioned works either evaluated XAI algorithms in a case-by-case manner, or only addressed computational metrics or doctors' ratings, without utilizing both. To the best of our knowledge, few works conducted both user studies and computational metrics evaluation on XAI for MIA in a systematic manner, nor did they incorporate clinical requirements in the evaluation. Furthermore, evaluation on the problem of multi-modal medical image explanations is underexplored. Our work is the first to address these research gaps.

3 Clinical Task, Data, and Model

We present the clinical task, medical dataset, and convolutional neural network (CNN) models prepared for the evaluation.

Clinical Task and Data As a type of primary brain tumors, gliomas are one of the most devastating cancers. Grading gliomas based on MRI could provide physicians indispensable information on patients’ treatment plan and prognosis. AI-based clinical decision support equipped with explanations has the potential to assist neurosurgeons to predict glioma grade and their genetic biomarker status based on brain imaging (Jin et al. 2020).

In our evaluation, we focus on the glioma grading task to classify gliomas into lower-grade (LGG) or high-grade gliomas (HGG). We used the publicly available BraTS 2020 dataset¹ and a BraTS-based synthetic dataset (described in §5.2). Both are multi-modal MRI with four modalities of T1, T1C (contrast enhancement), T2, and FLAIR.

We chose this task because we have access to clinical collaborators who can provide clinical insights and assessment. In addition, built upon the publicly available BraTS and its associated TCIA dataset which contains rich clinical and genomic labels, the basic tumor grading task can easily be extended to other clinically relevant tasks such as predicting patients’ genetic biomarker mutant status or prognosis.

Multi-Modality Learning Approaches for building CNN models that fuse multi-modal medical images can be divided into three categories: methods that fuse multi-modal features at the *input-level*, *feature-level*, or *decision-level* (Xu 2019). We focus on the most common setting of multi-modal medical imaging learning tasks: *input-level* multi-modal image fusion (Shen, Wu, and Suk 2017), in which the multi-modal images are stacked as image channels and fed as input to a CNN. The modality-specific information is fused by summing up the weighted modality value in the first convolutional layer.

Specifically², for BraTS dataset, we trained a VGG-like 3D CNN with six convolutional layers. It receives multi-modal 3D MR images $X \in \mathbb{R}^{4 \times 240 \times 240 \times 155}$. We report evaluation results on the test set in a five-fold cross-validation. We used a weighted sampler to handle the imbalanced data. The models were trained with a learning rate = 0.0005, batch size = 4, and training epoch of 32, 49, 55, 65, 30 for each fold selected by the validation data. The accuracies of the five folds were $87.81 \pm 3.40\%$ (mean±std).

For the synthetic brain tumor dataset, we fine-tuned a pre-trained DenseNet121 model that receives 2D multi-modal MRI input slices of $X \in \mathbb{R}^{4 \times 256 \times 256}$. We used the same training strategies as described above. The model achieved $95.70 \pm 0.06\%$ accuracy on the test set.

4 Physician User Study

We conducted a user study including an online survey and an optional within-/post-survey interview with neurosur-

¹Multimodal Brain Tumor Segmentation Challenge www.med.upenn.edu/cbica/brats2020/data.html

²Code: github.com/weinajin/multimodal_explanation

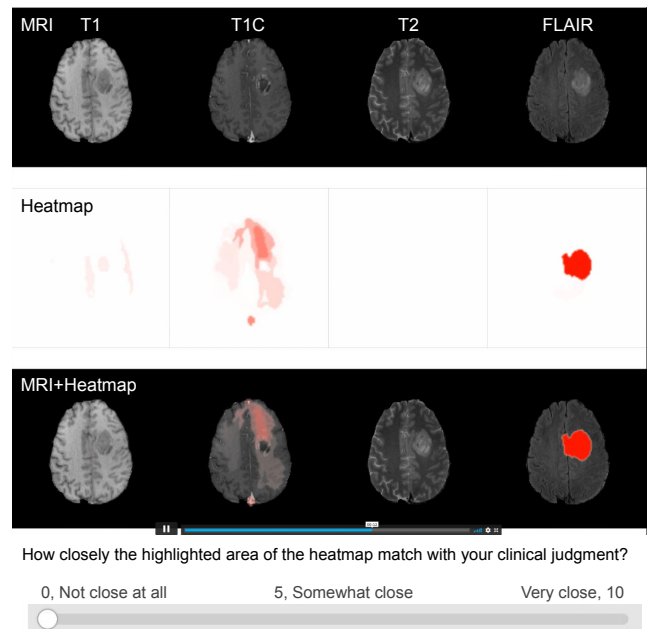


Figure 1: 3D heatmap (in video format) and questionnaire in the user study. Column: each MRI modality. Row: MRI, heatmap, and heatmap overlaid on MRI. Redness indicates the importance of that area for prediction.

geons. The survey, with a low-fidelity XAI system embedded to mimic XAI usage scenario in clinical decision support, asked neurosurgeons to interpret, comment, and rate the generated 3D multi-modal heatmaps (Fig. 1). Neurosurgeons rated the heatmaps regarding explanation *plausibility*, i.e.: “how closely the highlighted areas of the heatmap match with your clinical judgment?” The user study was approved by the Research Ethics Board of Simon Fraser University (Ethics No.: H20-03588). Six neurosurgeons were recruited and participated in the survey. Two of them participated in the optional interview. The survey lasted for 1 hour, and the interview lasted for 30 minutes. Details on the user study are in the Appendix³.

We extracted **clinical interpretation patterns of multi-modal explanations** using qualitative data analysis on clinicians’ comments. When interpreting multi-modal images, physicians tend to **prioritize modalities** for a given task.

“Many of us just look at FLAIR and T1C. 90% of my time (interpreting the MRI) is on the T1C, and then I will spend 2% on each of the other modalities.”

In addition to describing the modality importance information, clinicians expected the heatmaps to correctly **localize features** that are discriminative for prediction (in this glioma grading task, it is the features inside the tumor regions (Law et al. 2003; ho Cho et al. 2018)).

“This one (feature ablation heatmap, Fig. 1) is not bad on the FLAIR (modality), it (the tumor) is very well detected. I wouldn’t give it a perfect mark, because I would like it to prioritize the T1C (modality) instead. But I’ll give it (a score

³Appendix and Supplemental: arxiv.org/abs/2203.06487

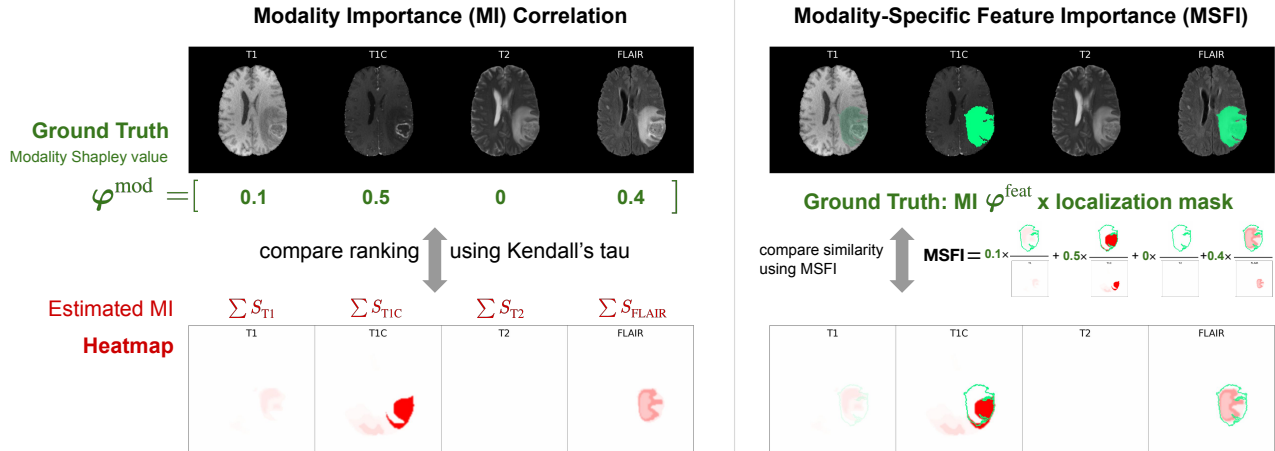


Figure 2: Two proposed computational evaluation metrics for multi-modal medical image explanation.

of) 75 (out of 100).”

We further propose computational evaluation metrics based on the clinical patterns (§5).

5 Evaluation on Multi-Modal Explanations

Our evaluation focuses on *post-hoc* XAI algorithms. Compared to *ante-hoc* ones – such as attention mechanism – the evaluation results are not confounded by model types. Post-hoc XAI algorithms explain for already deployed or trained black-box models by probing model parameters and/or input-output pairs. We include 16 post-hoc XAI algorithms in our evaluation, which belong to three categories:

- **Activation-based:** GradCAM (Selvaraju et al. 2017)
- **Gradient-based:** Gradient (Simonyan, Vedaldi, and Zisserman 2014), Guided BackProp (Springenberg et al. 2015), Guided GradCAM (Selvaraju et al. 2017), DeepLift (Shrikumar, Greenside, and Kundaje 2017), InputXGradient (Shrikumar et al. 2017), Integrated Gradients (Sundararajan, Taly, and Yan 2017), Gradient Shap (Lundberg and Lee 2017), Deconvolution (Zeiler and Fergus 2014), Smooth Grad (Smilkov et al. 2017)
- **Perturbation-based:** Occlusion (Zeiler and Fergus 2014; Zintgraf et al. 2017), Feature Ablation, Shapley Value Sampling (Castro, Gómez, and Tejada 2009), Kernel Shap (Lundberg and Lee 2017), Feature Permutation (Fisher, Rudin, and Dominici 2019), Lime (Ribeiro, Singh, and Guestrin 2016)

A detailed review of these algorithms and heatmap post-processing method are in the Appendix. Next, we describe the metrics to evaluate multi-modal explanation. Corresponding to the above clinical patterns on multi-modal explanation, we propose two new evaluation metrics (Fig. 2) at different granularity levels: **1) Modality importance (MI):** it measures a model’s overall importance of each modality as a whole; and **2) Modality-specific feature importance (MSFI):** it measures how well the heatmap can localize the modality-dependent important features in each modality.

5.1 Modality Importance (MI)

Corresponding to the clinical pattern on **modality prioritization**, MI uses importance scores to indicate how critical is a modality to the overall prediction. To determine the ground-truth MI, we use Shapley value from cooperative game theory (Shapley 1951), due to its desirable properties such as efficiency, symmetry, linearity, and marginalism. In a set of M modalities, Shapley value treats each modality m as a player in a cooperative game play. It is the unique solution to fairly distribute the total contributions (in our case, the model performance) among each individual modality m .

Shapley value-based MI ground-truth We define the modality Shapley value φ_m to be the ground truth MI value for a modality m . It is calculated as:

$$\varphi_m(v) = \sum_{c \subseteq \mathcal{M} \setminus \{m\}} \frac{|c|!(M - |c| - 1)!}{M!} (v(c \cup \{m\}) - v(c)), \quad (1)$$

where $\mathcal{M} \setminus \{m\}$ denotes all modality subsets \mathcal{M} not including modality m , and v is the model performance metric. In our evaluation, we defined v as the test set accuracy, and the accuracy on a subset of modalities $v(c)$ and $v(c \cup \{m\})$ was calculated by setting all values to 0 for modalities that were not included in the subset. We denote such modality Shapley value as φ_m^{mod} .

MI correlation To measure the agreement on modality importance between heatmaps and the ground-truth modality Shapley value, for each post-processed heatmap, we calculate a vector of *estimated MI* as the sum of all positive values of the heatmap for each modality. *MI correlation* measures the MI ranking agreement between the ground-truth φ^{mod} and the *estimated MI*, calculated using Kendall’s Tau-b correlation. MI correlation is a measure of explanation *faithfulness*, since the ground-truth Shapley value reflects the model’s internal decision process, and is calculated without human prior knowledge.

5.2 Modality-Specific Feature Importance (MSFI)

MI prioritizes the important modality, but it is a coarse measurement and does not examine the particular image features within each modality. We further propose MSFI metric that corresponds to the clinical pattern on both **feature localization** and **modality prioritization**. MSFI combines two ground-truth information: MI and modality-dependent important features. Specifically, for each modality m , MSFI calculates the portion of heatmap values S_m inside the ground truth feature localization mask L_m , weighted by MI φ_m (which is normalized to $[0, 1]$):

$$\widehat{\text{MSFI}} = \sum_m \varphi_m \frac{\sum_i \mathbb{1}(L_m^i > 0) \odot S_m^i}{\sum_i S_m^i},$$

$$\text{MSFI} = \frac{\widehat{\text{MSFI}}}{\sum_m \varphi_m},$$

where i denotes the spatial location of heatmap S_m ; $\mathbb{1}$ is the indicator function that selects heatmap values inside feature mask L_m ; $\widehat{\text{MSFI}}$ is unnormalized, and MSFI is the normalized metric in the range $[0, 1]$. A higher MSFI score indicates a heatmap is better at highlighting important modalities and their localized features. If the feature localization annotations L_m reflects human prior knowledge on the given task, then MSFI is a metric on explanation *plausibility*. Otherwise if L_m reflects the intrinsic knowledge the model learned (as in the later subsection on a synthetic dataset), MSFI can also be used as a metric for *faithfulness*. Unlike other ground-truth similarity metrics such as IoU, MSFI is less dependent on either heatmap signal intensity, or area of the ground truth localization mask, which makes it a robust metric. Next, we describe our evaluation experiments of applying MSFI on a real dataset (BraTS) and a synthetic dataset.

MSFI Evaluation on a Medical Image Dataset of Real Patients We use the same BraTS data and model as in §5.1. To make the ground truth represent the modality-specific feature localization information, we slightly change the way to compute the modality Shapley value φ_m . We define φ_m^{feat} to be the importance of the localized feature on each modality. Specifically, instead of ablating the modality as a whole to create a modality subset c in Eq. 1, we zero-ablate only the localized feature region defined by the feature localization map. We calculate MSFI score with the new ground truth φ_m^{feat} .

MSFI Evaluation on a Synthesized Dataset with Controllable Ground Truths To better control the ground truths of modality importance and feature localization, we use a synthetic multi-modal medical image dataset on the same brain tumor grading task. To control the ground-truth of feature localization, we use the GAN-based (generative adversarial network) tumor synthesis model developed by Kim, Kim, and Park (2021) to generate two types of tumors and their segmentation maps, mimicking low- and high-grade gliomas by varying their shapes (round vs. irregular (ho Cho et al. 2018)).

To control the ground-truth of modality importance, inspired by Kim et al. (2018), we set tumor features on T1C modality to have 100% alignment with the ground-truth label, and on FLAIR to have a probability of 70% alignment, i.e., the tumor features on FLAIR corresponds to the correct label with 70% probability. The rest modalities have 0 MI value, as they are designed to not contain class discriminative features. The model may learn to pay attention to either the less noisy T1C modality, or the more noisy FLAIR modality, or both. To determine their relative importance as the ground truth MI, we test the well-trained model on two datasets that only show tumors (without the background of normal brain tissue) in all modalities:

- *T1C dataset*: The tumor shape feature has 100% alignment with the ground-truth label in T1C modality, and 0% alignment in FLAIR. Its test accuracy is denoted as Acc_{T1C} .
- *FLAIR dataset*: The tumor shape feature has 100% alignment with ground truth in FLAIR modality, and 0% alignment in T1C. Its test accuracy is denoted as $\text{Acc}_{\text{FLAIR}}$.

The test performance Acc_{T1C} and $\text{Acc}_{\text{FLAIR}}$ indicate the degree of model reliance on that modality to make predictions. We use them as the ground truth MI. On the test set, $\text{Acc}_{\text{T1C}} = 0.99$, $\text{Acc}_{\text{FLAIR}} = 0$. In this way, we constructed a model with known ground truth of MI = 1 for T1C, and 0 for the rest modalities. The MSFI in this case is a metric for *faithfulness*, as both ground truths are known and baked in the model decision process. We then generate heatmaps on top of the model, and calculate their MSFI.

6 Evaluation Results

6.1 Modality Importance Correlation

The MI correlation results are shown in Table 1. Except for certain XAI algorithms (GradCAM, KernelSHAP, Feature Permutation) that could only generate one same heatmap explanation for all modalities (non-modality-specific heatmap), in general, most algorithms correctly identified the important modalities for model decision, indicating they were *faithful* at the modality level, but with large variances among individual data points.

6.2 Modality-Specific Feature Importance

MSFI Results on BraTS Dataset For all heatmap algorithms, their mean MSFI scores are in the middle to lower range, with large variances among individual data points (Table. 1, Fig. 3-top). To test whether human judgment of heatmap *plausibility* measured by MSFI can be indicative of the model’s decision quality, we divided the data into correctly or incorrectly predicted groups. For each algorithm, we tested whether there was a significant difference regarding their MSFI scores between the two groups using Mann-Whitney U test, and the significant level for each algorithm is shown in Table 1. Despite some algorithms showing statistical significance, due to large variances, such significance may not be easily captured by clinical users, as the visualized MSFI distributions of the correctly and incorrectly predicted groups were overlapping with each other (as shown by the blue and red dots in Fig. 3-top). This indicates assessing heatmap quality may not be a reliable signal for physi-

	<u>MSFI</u> (BraTS)	Stat. Sig.	<u>MSFI</u> (Synthetic)	<u>MI</u> Correlation	<u>diffAUC</u>	<u>FP</u>	<u>IoU</u>	<u>Doctors'</u> <u>Rating</u>	<u>Speed</u> (second)
Guided BackProp	0.48±0.33	NS	0.49±0.21	0.80±0.27	0.21±0.24	0.34±0.29	0.02±0.01	0.6±0.1	1.7±1.1
Guided GradCAM	0.50±0.36	**	0.42±0.29	0.81±0.26	0.26 ± 0.25	0.37±0.31	0.02±0.02	0.1±0.0	2.2±1.4
InputXGradient	0.51±0.32	*	0.23±0.14	0.87±0.16	0.17 ± 0.12	0.40±0.30	0.08±0.05	0.1±0.0	1.7±1.1
DeepLift	0.54±0.34	*	0.22±0.23	0.53±0.45	0.19 ± 0.14	0.43±0.32	0.08±0.05	0.6±0.2	3.8±2.0
Integrated Gradients	0.48±0.31	*	0.22±0.19	0.73±0.39	0.17 ± 0.12	0.36±0.28	0.08±0.05	0.5±0.0	62±29
Occlusion	0.28±0.26	***	0.22±0.25	0.60±0.33	0.13 ± 0.15	0.18±0.19	0.03±0.02	0.6±0.2	989±835
Gradient Shap	0.48±0.31	*	0.22±0.19	0.53±0.40	0.17 ± 0.12	0.36±0.28	0.08±0.05	0.5±0.0	6.8±3.0
Feature Ablation	0.48±0.30	***	0.19±0.23	0.27±0.44	0.30 ± 0.15	0.35±0.28	0.05±0.06	0.4±0.4	74±23
Gradient	0.34±0.23	NS	0.19±0.13	0.47±0.16	0.05 ± 0.09	0.20±0.16	0.02±0.01	0.6±0.6	1.8±1.1
Shapley Value Sampling	0.38±0.24	***	0.10±0.10	0.47±0.65	0.35 ± 0.04	0.25±0.21	0.04±0.05	0.2±0.1	2018±654
Kernel Shap	0.28±0.25	**	0.08±0.08	NaN	0.26 ± 0.16	0.18±0.20	0.06±0.08	0.1±0.0	194±100
Feature Permutation	0.23±0.26	NS	0.08±0.07	NaN	0.05 ± 0.05	0.13±0.18	0.05±0.07	0.1±0.0	14±2.2
Lime	0.24±0.21	**	0.05±0.07	0.53±0.58	0.37 ± 0.08	0.14±0.16	0.05±0.06	0.1±0.0	341±181
Deconvolution	0.26±0.23	NS	0.04±0.02	0.73±0.39	0.11 ± 0.21	0.17±0.17	0.02±0.01	0.4±0.4	1.8±1.0
Smooth Grad	0.27±0.17	*	0.03±0.02	0.67±0.00	0.29 ± 0.25	0.16±0.12	0.02±0.01	0.7±0.1	12±6
GradCAM	0.04±0.03	***	0.02±0.02	NaN	0.16 ± 0.19	0.02±0.01	0.02±0.01	0.0±0.0	0.6±0.3

Table 1: Evaluation results. The table shows mean \pm std for each XAI algorithm regarding different evaluation metrics on the test set. Metrics are in the range $[0, 1]$ (except for diffAUC and MI which is $[-1, 1]$), the higher, the better. Metrics for faithfulness and plausibility are marked with solid and dotted underline respectively, with bolded text indicating the top faithfulness performance for a metric. Stat. Sig. tests the correlation between MSFI (BraTS) score and the two groups of correct/incorrect predictions, with * indicates $p < 0.05$; ** for $p < 0.01$; and *** for $p < 0.001$; NS for not significant. “NaN” in MI is because the heatmap is not modality-specific and the correlation is not computable. Speed is the time spent to generate a heatmap.

cians to get alerted to AI model’s potential decision flaw. This finding echoes with the prior study on the heatmaps’ poor diagnosing capability for model generalization (Viviano et al. 2021). In summary, all examined algorithms did not fulfill the clinical requirement of being indicative of model decision quality via users’ *plausibility* judgment.

MSFI Results on the Synthetic Dataset With known ground truths on important modalities and features to assess *faithfulness* at the fine-grained feature level, the results (Table 1, Fig. 3-bottom) showed the examined algorithms had poor agreements with the ground truths, indicating their low *faithfulness* performances at the modality-specific feature level: even for algorithms that had relatively higher MSFI, the scores were less than 0.5. In addition, their faithfulness performances were not stable, with large variances across data points.

6.3 Comparison with Non-Modality-Specific Evaluations

We utilized additional existing metrics that are non-modality specific. To evaluate *faithfulness*, we iteratively ablated the input from the most to the least important features according to the heatmap, and plotted the relationship between gradual feature ablation and model accuracy. We used **diffAUC** to quantify the degree of performance deterioration by calculating the difference of area under the curve (AUC) between an XAI algorithm and its random ablation baseline. The low diffAUC scores in Table 1 indicates a low level of *faithfulness* at the non-modality-specific feature level.

To quantify non-modality-specific *plausibility*, we used

metrics of **IoU** and feature portion (**FP**, the sum of heatmap values inside the ground-truth feature mask over the total values). We inspected the relationship between MSFI and the non-modality-specific metrics: MSFI had a strong Pearson correlation (0.96) with FP, and a moderate correlation (0.55) with IoU. MSFI can be regarded as a generalized form of FP: it requires the same ground-truth annotation as of IoU and FP, and has the advantage to incorporate the clinical interpretation pattern of modality prioritization.

Physicians’ average quantitative rating on heatmap quality had moderate correlation with MSFI (0.43) and FP (0.43), and low correlation with IoU (0.26). In addition, physicians’ inter-rater agreement on the heatmap quality is low (Krippendorff’s Alpha = 0.16, Fleiss’ kappa = -0.017), indicating that doctors’ judgment of heatmap quality could be very subjective.

7 Discussions

Existing XAI Algorithms Failed to Fulfill Clinical Requirements The examined 16 post-hoc heatmap algorithms failed to meet the clinical requirements, as they were not *faithful* to the model decision process at the feature level (evidenced by the low and unstable MSFI on synthetic data and diffAUC), and users’ *plausibility* judgment of the explanation was not indicative of the AI model decision quality (evidenced by the MSFI (BraTS) statistical test and its distribution visualization). The poor and unstable explanation performance may lead to undesirable consequences in clinical settings. For example, in our user study, we observed doctors tend to assume the explanation is totally *faithful* to

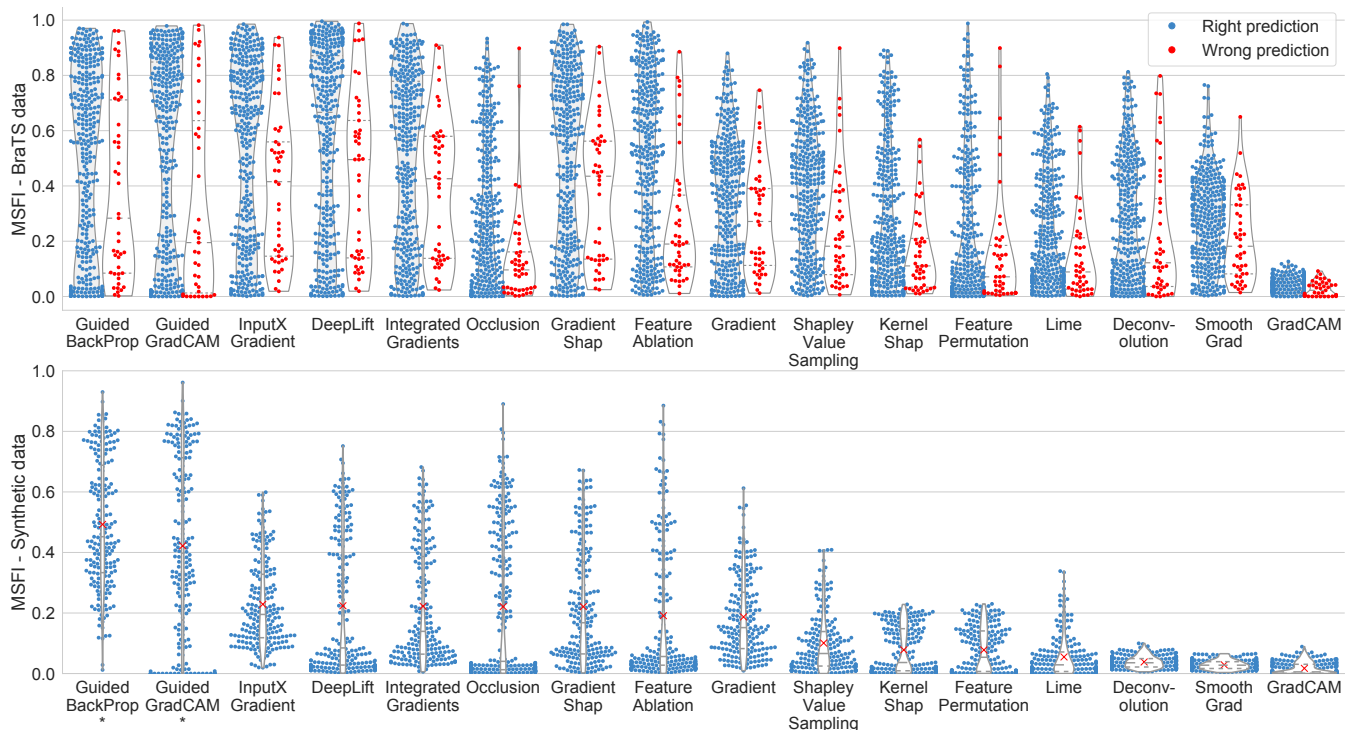


Figure 3: MSFI scores of the evaluated 16 heatmap algorithms. The swarm and its overlaid violin plots show the evaluation score distribution of MSFI on BraTS (top) and synthetic dataset (bottom). X-axis is each heatmap method. Y-axis is the MSFI score, with a higher score indicating better alignment of a heatmap with the clinical patterns on modality prioritization and feature localization. For the bottom plot, red crosses indicate the means, and there was a statistically significant difference in MSFI among the 16 heatmap methods as determined by Friedman test, and the top methods have their name marked with * (determined by not significantly different from the top two means using post-hoc Nemenyi test).

the model’s decision process (which aligns with prior findings (Kaur et al. 2020)), therefore would take or reject the model’s suggestion by judging the *plausibility* of the explanation. Given doctors’ mental model on the assumption of totally *faithful* explanation, the evaluation for *faithfulness* should be put ahead of the evaluation for *plausibility* on model decision quality indication. Future work needs to propose explanation methods that are both *faithful* to the model decisions, and the *plausibility* assessment is more indicative of model decision quality.

Real-World Application of MSFI The proposed MSFI can be regarded as a proxy for physicians’ manual assessment of heatmap quality. By automatically quantifying human assessment, MSFI helps AI practitioners to automate the XAI algorithm selection/optimization process to identify algorithms whose plausibility measure has a high correlation with model decision quality. MSFI can be applied to other multi-modal medical image tasks. It requires feature masks on a batch of test data which can be generated by human annotation or trained models. Depending on the task, the feature masks could be modality-specific or the same for all modalities (as in the case of BraTS dataset). The MSFI metric is the first step towards tackling the clinically important problem of multi-modal explanation.

8 Conclusion

Explainable AI is an indispensable component when implementing AI as a clinical assistant on medical image-related tasks. In this work, we investigate the essential question raised in both machine learning and clinical fields: Can existing XAI methods fulfill clinical requirements on multi-modal explanation? We conduct a clinical requirement-grounded, systematic evaluation to answer this question, including both computational and physicians’ assessment. By incorporating physicians’ clinical image and explanation interpretation patterns into the evaluation metric, we propose MSFI that encodes both modality prioritization and feature localization. Our evaluation with 16 existing XAI algorithms on a brain tumor grading task shows that, the existing XAI algorithms are not proposed to fulfill the clinical requirements on multi-modal medical imaging explanation. This work sheds light on the risk of directly applying post-hoc XAI methods on black-box models in multi-modal medical imaging tasks. Future work may incorporate the informativeness of MSFI for decision quality into the objective function, and propose new heatmap methods to truthfully reflect the model decision process and quality. Ultimately, we expect this study can help increase awareness of trustworthiness in AI for clinical tasks and accelerate other applications of AI for healthcare.

Acknowledgments

We thank all physician participants in the user study. We thank Mostafa Fatehi, Sunho Kim, Yiqi Yan, Mayur Mallya, Shahab Aslani, and Ben Cardoen for their generous support and helpful discussions. We thank all reviewers for their comments. This study was funded by BC Cancer Foundation-BrainCare BC Fund, and was enabled in part by support from NVIDIA and Compute Canada.

References

- Alvarez-Melis, D.; and Jaakkola, T. S. 2018. On the Robustness of Interpretability Methods. *CoRR*, abs/1806.08049.
- Bau, D.; Zhou, B.; Khosla, A.; Oliva, A.; and Torralba, A. 2017. Network Dissection: Quantifying Interpretability of Deep Visual Representations. In *Computer Vision and Pattern Recognition*.
- Bitar, R.; Leung, G.; Perng, R.; Tadros, S.; Moody, A. R.; Sarrazin, J.; McGregor, C.; Christakis, M.; Symons, S.; Nelson, A.; and Roberts, T. P. 2006. MR Pulse Sequences: What Every Radiologist Wants to Know but Is Afraid to Ask. *Radiographics*, 26(2): 513–537.
- Bussone, A.; Stumpf, S.; and O’Sullivan, D. 2015. The Role of Explanations on Trust and Reliance in Clinical Decision Support Systems. In *2015 International Conference on Healthcare Informatics*, 160–169.
- Cai, C. J.; Winter, S.; Steiner, D.; Wilcox, L.; and Terry, M. 2019. "Hello AI": Uncovering the Onboarding Needs of Medical Practitioners for Human-AI Collaborative Decision-Making. *Proc. ACM Hum.-Comput. Interact.*, 3(CSCW).
- Castro, J.; Gómez, D.; and Tejada, J. 2009. Polynomial calculation of the Shapley value based on sampling. *Computers & Operations Research*, 36(5): 1726–1730. Selected papers presented at the Tenth International Symposium on Locational Decisions (ISOLDE X).
- Cochard, L. R.; and Netter, F. H. 2012. *Netters introduction to imaging*. Elsevier Saunders.
- de Souza, L. A.; Mendel, R.; Strasser, S.; Ebigbo, A.; Probst, A.; Messmann, H.; Papa, J. P.; and Palm, C. 2021. Convolutional Neural Networks for the evaluation of cancer in Barrett’s esophagus: Explainable AI to lighten up the black-box. *Computers in Biology and Medicine*, 135: 104578.
- Došilović, F. K.; Brčić, M.; and Hlupić, N. 2018. Explainable artificial intelligence: A survey. In *2018 41st International Convention on Information and Communication Technology, Electronics and Microelectronics (MIPRO)*, 0210–0215.
- Fisher, A.; Rudin, C.; and Dominici, F. 2019. All Models are Wrong, but Many are Useful: Learning a Variable’s Importance by Studying an Entire Class of Prediction Models Simultaneously. *Journal of Machine Learning Research*, 20(177): 1–81.
- Hase, P.; and Bansal, M. 2020. Evaluating Explainable AI: Which Algorithmic Explanations Help Users Predict Model Behavior? In *Proceedings of the 58th Annual Meeting of the Association for Computational Linguistics*, 5540–5552. Online: Association for Computational Linguistics.
- He, J.; Baxter, S. L.; Xu, J.; Xu, J.; Zhou, X.; and Zhang, K. 2019. The practical implementation of artificial intelligence technologies in medicine. *Nature Medicine*, 25(1): 30–36.
- ho Cho, H.; hak Lee, S.; Kim, J.; and Park, H. 2018. Classification of the glioma grading using radiomics analysis. *PeerJ*, 6: e5982.
- Hooker, S.; Erhan, D.; Kindermans, P.-J.; and Kim, B. 2019. A Benchmark for Interpretability Methods in Deep Neural Networks. In *NeurIPS*, 9734–9745.
- Jacovi, A.; and Goldberg, Y. 2020. Towards Faithfully Interpretable NLP Systems: How Should We Define and Evaluate Faithfulness? In *Proceedings of the 58th Annual Meeting of the Association for Computational Linguistics*, 4198–4205. Online: Association for Computational Linguistics.
- Jin, W.; Fan, J.; Gromala, D.; Pasquier, P.; and Hamarneh, G. 2021. EUCA: the End-User-Centered Explainable AI Framework. arXiv:2102.02437.
- Jin, W.; Fatehi, M.; Abhishek, K.; Mallya, M.; Toyota, B.; and Hamarneh, G. 2020. Artificial intelligence in glioma imaging: challenges and advances. *Journal of Neural Engineering*, 17(2): 21002.
- Kaur, H.; Nori, H.; Jenkins, S.; Caruana, R.; Wallach, H.; and Wortman Vaughan, J. 2020. *Interpreting Interpretability: Understanding Data Scientists’ Use of Interpretability Tools for Machine Learning*, 1–14. New York, NY, USA: Association for Computing Machinery. ISBN 9781450367080.
- Kim, B.; Wattenberg, M.; Gilmer, J.; Cai, C.; Wexler, J.; Viegas, F.; and sayres, R. 2018. Interpretability Beyond Feature Attribution: Quantitative Testing with Concept Activation Vectors (TCAV). In Dy, J.; and Krause, A., eds., *Proceedings of the 35th International Conference on Machine Learning*, volume 80 of *Proceedings of Machine Learning Research*, 2668–2677. PMLR.
- Kim, S.; Kim, B.; and Park, H. 2021. Synthesis of brain tumor multicontrast MR images for improved data augmentation. *Medical Physics*.
- Lansberg, M. G.; Albers, G. W.; Beaulieu, C.; and Marks, M. P. 2000. Comparison of diffusion-weighted MRI and CT in acute stroke. *Neurology*, 54(8): 1557–1561.
- Law, M.; Yang, S.; Wang, H.; Babb, J. S.; Johnson, G.; Cha, S.; Knopp, E. A.; and Zagzag, D. 2003. Glioma Grading: Sensitivity, Specificity, and Predictive Values of Perfusion MR Imaging and Proton MR Spectroscopic Imaging Compared with Conventional MR Imaging. *American Journal of Neuroradiology*, 24(10): 1989–1998.
- Lundberg, S. M.; Erion, G.; Chen, H.; DeGrave, A.; Prutkin, J. M.; Nair, B.; Katz, R.; Himmelfarb, J.; Bansal, N.; and Lee, S.-I. 2020. From local explanations to global understanding with explainable AI for trees. *Nature Machine Intelligence*, 2(1): 56–67.
- Lundberg, S. M.; and Lee, S.-I. 2017. A Unified Approach to Interpreting Model Predictions. In Guyon, I.; Luxburg, U. V.; Bengio, S.; Wallach, H.; Fergus, R.; Vishwanathan, S.; and Garnett, R., eds., *Advances in Neural Information Processing Systems*, volume 30. Curran Associates, Inc.

- Mohseni, S.; Zarei, N.; and Ragan, E. D. 2021. A Multidisciplinary Survey and Framework for Design and Evaluation of Explainable AI Systems. *ACM Trans. Interact. Intell. Syst.*, 11(3–4).
- Patel, A.; Silverberg, C.; Becker-Weidman, D.; Roth, C.; and Deshmukh, S. 2016. Understanding Body MRI Sequences and Their Ability to Characterize Tissues. *Universal Journal of Medical Science*, 4(1): 1–9.
- Reyes, M.; Meier, R.; Pereira, S.; Silva, C. A.; Dahlweid, F.-M.; von Tengg-Kobligk, H.; Summers, R. M.; and Wiest, R. 2020. On the Interpretability of Artificial Intelligence in Radiology: Challenges and Opportunities. *Radiology: Artificial Intelligence*, 2(3): e190043.
- Ribeiro, M. T.; Singh, S.; and Guestrin, C. 2016. "Why Should I Trust You?": Explaining the Predictions of Any Classifier. In *Proceedings of the 22nd ACM SIGKDD International Conference on Knowledge Discovery and Data Mining*, KDD '16, 1135–1144. New York, NY, USA: Association for Computing Machinery. ISBN 9781450342322.
- Samek, W.; Binder, A.; Montavon, G.; Lapuschkin, S.; and Müller, K. 2017. Evaluating the Visualization of What a Deep Neural Network Has Learned. *IEEE Transactions on Neural Networks and Learning Systems*, 28(11): 2660–2673.
- Selvaraju, R. R.; Cogswell, M.; Das, A.; Vedantam, R.; Parikh, D.; and Batra, D. 2017. Grad-CAM: Visual Explanations from Deep Networks via Gradient-Based Localization. In *2017 IEEE International Conference on Computer Vision (ICCV)*, 618–626.
- Shapley, L. S. 1951. *Notes on the n-Person Game – II: The Value of an n-Person Game*. Santa Monica, CA: RAND Corporation.
- Shen, D.; Wu, G.; and Suk, H.-I. 2017. Deep Learning in Medical Image Analysis. *Annual Review of Biomedical Engineering*, 19(1): 221–248.
- Shrikumar, A.; Greenside, P.; and Kundaje, A. 2017. Learning Important Features through Propagating Activation Differences. In *Proceedings of the 34th International Conference on Machine Learning - Volume 70*, ICML'17, 3145–3153. JMLR.org.
- Shrikumar, A.; Greenside, P.; Shcherbina, A.; and Kundaje, A. 2017. Not Just a Black Box: Learning Important Features Through Propagating Activation Differences. arXiv:1605.01713.
- Simonyan, K.; Vedaldi, A.; and Zisserman, A. 2014. Deep Inside Convolutional Networks: Visualising Image Classification Models and Saliency Maps. arXiv:1312.6034.
- Singh, A.; Sengupta, S.; J., J. B.; Mohammed, A. R.; Faruq, I.; Jayakumar, V.; Zelek, J.; and Lakshminarayanan, V. 2020. What is the Optimal Attribution Method for Explainable Ophthalmic Disease Classification? In Fu, H.; Garvin, M. K.; MacGillivray, T.; Xu, Y.; and Zheng, Y., eds., *Ophthalmic Medical Image Analysis*, 21–31. Cham: Springer International Publishing. ISBN 978-3-030-63419-3.
- Singh, A.; Sengupta, S.; and Lakshminarayanan, V. 2020. Explainable Deep Learning Models in Medical Image Analysis. *Journal of Imaging*, 6(6).
- Smilkov, D.; Thorat, N.; Kim, B.; Viégas, F.; and Wattenberg, M. 2017. SmoothGrad: removing noise by adding noise. arXiv:1706.03825.
- Sokol, K.; and Flach, P. 2020. Explainability fact sheets: A framework for systematic assessment of explainable approaches. *FAT* 2020 - Proceedings of the 2020 Conference on Fairness, Accountability, and Transparency*, 56–67.
- Springenberg, J. T.; Dosovitskiy, A.; Brox, T.; and Riedmiller, M. 2015. Striving for Simplicity: The All Convolutional Net. arXiv:1412.6806.
- Sundararajan, M.; Taly, A.; and Yan, Q. 2017. Axiomatic Attribution for Deep Networks. In *Proceedings of the 34th International Conference on Machine Learning - Volume 70*, ICML'17, 3319–3328. JMLR.org.
- Taghanaki, S. A.; Havaei, M.; Berthier, T.; Dutil, F.; Di Jorio, L.; Hamarneh, G.; and Bengio, Y. 2019. InfoMask: Masked Variational Latent Representation to Localize Chest Disease. In Shen, D.; Liu, T.; Peters, T. M.; Staib, L. H.; Essert, C.; Zhou, S.; Yap, P.-T.; and Khan, A., eds., *Medical Image Computing and Computer Assisted Intervention – MICCAI 2019*, 739–747. Cham: Springer International Publishing. ISBN 978-3-030-32226-7.
- Topol, E. J. 2019. High-performance medicine: the convergence of human and artificial intelligence. *Nature Medicine*, 25(1): 44–56.
- Vilone, G.; and Longo, L. 2021. Notions of explainability and evaluation approaches for explainable artificial intelligence. *Information Fusion*, 76: 89–106.
- Viviano, J. D.; Simpson, B.; Dutil, F.; Bengio, Y.; and Cohen, J. P. 2021. Saliency is a Possible Red Herring When Diagnosing Poor Generalization. In *International Conference on Learning Representations*.
- Xu, Y. 2019. Deep Learning in Multimodal Medical Image Analysis. In Wang, H.; Siuly, S.; Zhou, R.; Martin-Sanchez, F.; Zhang, Y.; and Huang, Z., eds., *Health Information Science*, 193–200. Cham: Springer International Publishing. ISBN 978-3-030-32962-4.
- Yeh, C.-K.; Hsieh, C.-Y.; Suggala, A.; Inouye, D. I.; and Ravikumar, P. K. 2019. On the (In)fidelity and Sensitivity of Explanations. In Wallach, H.; Larochelle, H.; Beygelzimer, A.; d'Alché-Buc, F.; Fox, E.; and Garnett, R., eds., *Advances in Neural Information Processing Systems*, volume 32. Curran Associates, Inc.
- Yin, F.; Shi, Z.; Hsieh, C.; and Chang, K. 2021. On the Faithfulness Measurements for Model Interpretations. *CoRR*, abs/2104.08782.
- Zeiler, M. D.; and Fergus, R. 2014. Visualizing and Understanding Convolutional Networks. In Fleet, D.; Pajdla, T.; Schiele, B.; and Tuytelaars, T., eds., *Computer Vision – ECCV 2014*, 818–833. Cham: Springer International Publishing. ISBN 978-3-319-10590-1.
- Zintgraf, L. M.; Cohen, T. S.; Adel, T.; and Welling, M. 2017. Visualizing Deep Neural Network Decisions: Prediction Difference Analysis. In *5th International Conference on Learning Representations, ICLR 2017, Toulon, France, April 24–26, 2017, Conference Track Proceedings*. OpenReview.net.